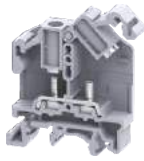


## STUD & BOLT TYPE TERMINAL BLOCKS

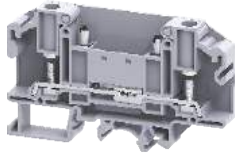
---



**Feed Through**

**175 - 183**

---



**Disconnect & Test**

**184 - 190**

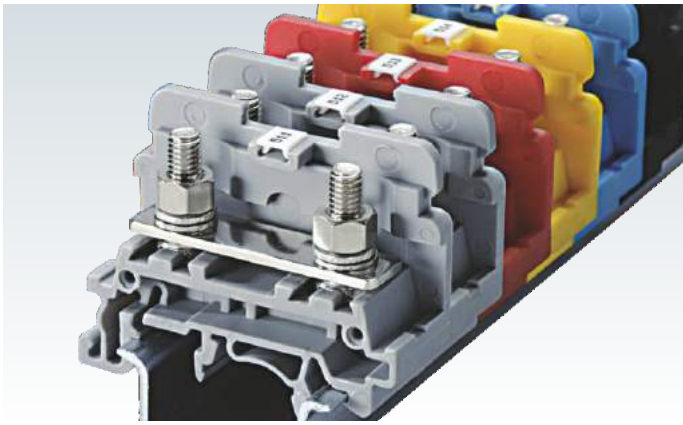
---



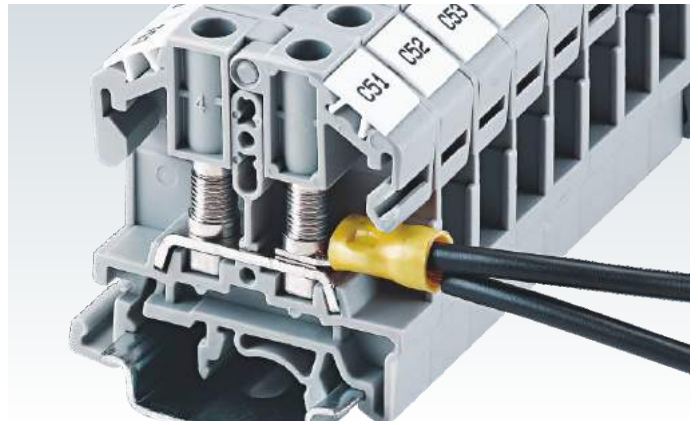
**Power Terminal Blocks**

**191 - 195**

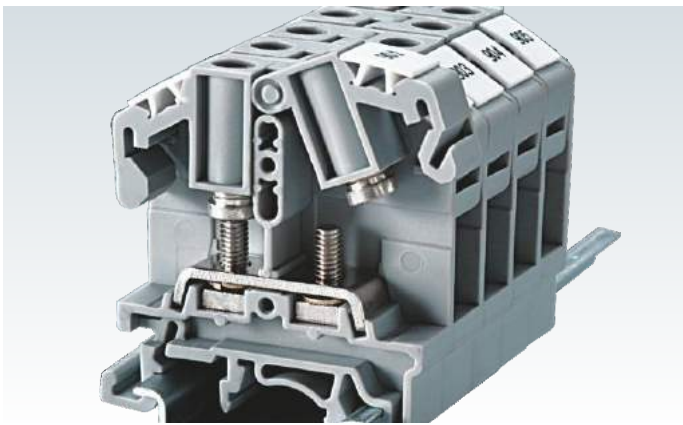
---



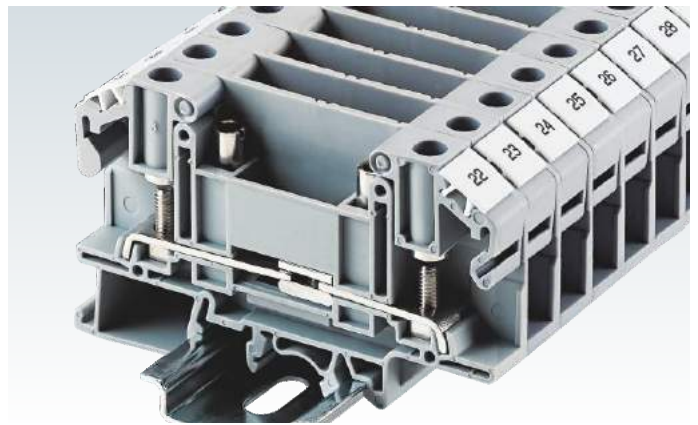
High Torque clamping system for ring & fork type lugs / ferrules. Extremely effective clamping system for areas prone to high vibrations.



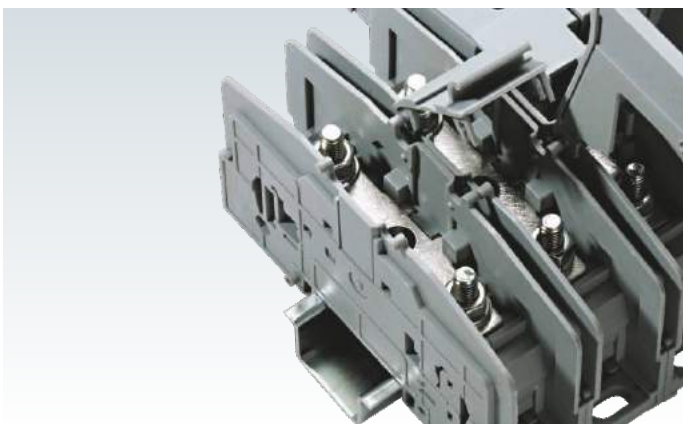
Multiple wires can be connected on a single clamping point. The bolt & nut system make these multi wire connections safe and secure.



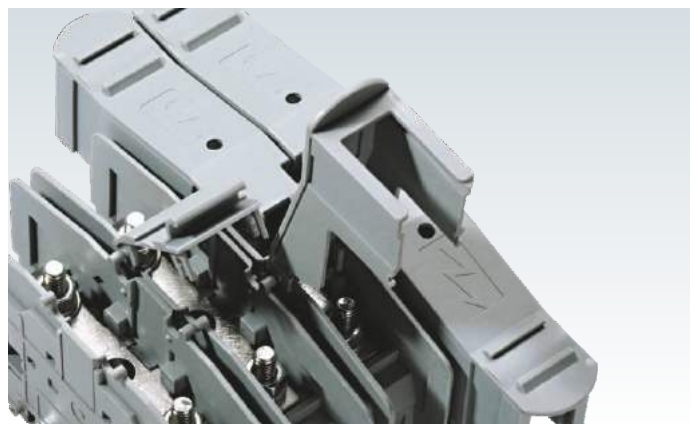
The fastening nut remains captive in the hinged plastic carrier. The nut is tightened by using a standard screwdriver.



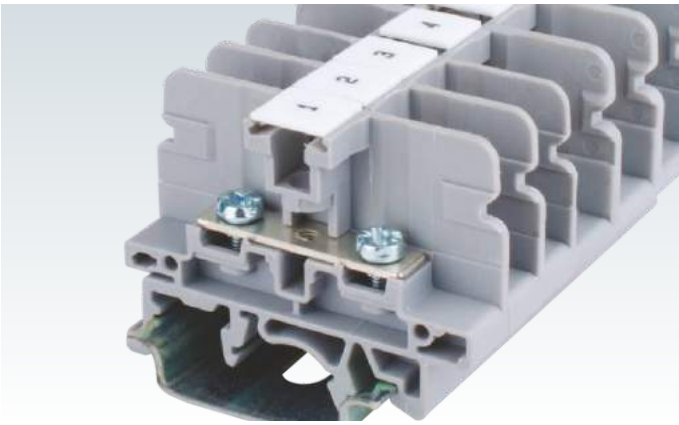
Disconnecting Terminal Block system is a versatile wire connection method for current transformer and power meters. A wide range of accessories eases the testing of these instruments.



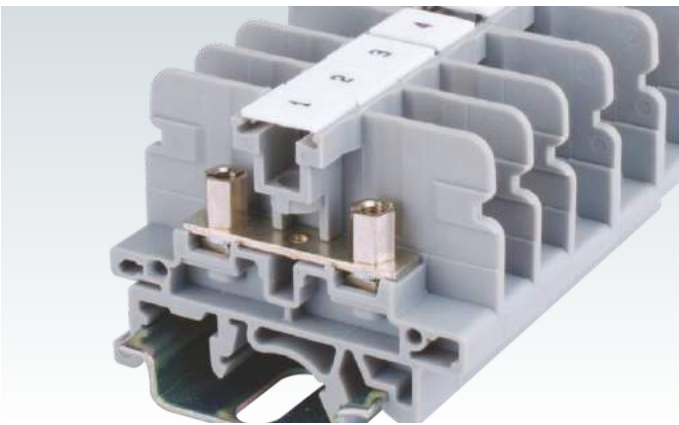
High current Terminal Blocks with a captive bolt provide extremely reliable connection for higher size wires. Integral isolation plates make these terminals extremely safe.



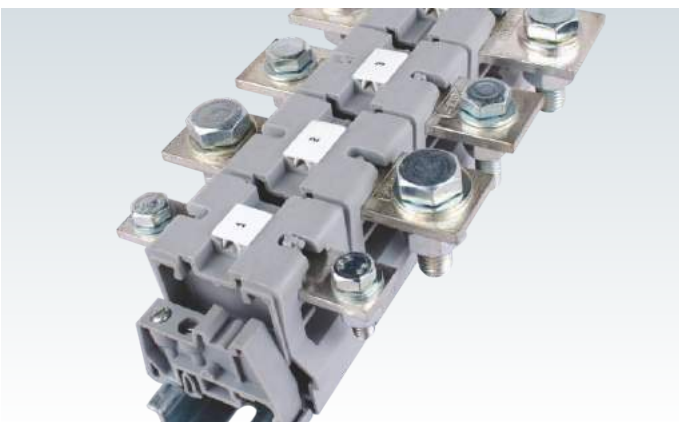
All open connection stud type Terminal Blocks can be covered with a protective shroud. The resulting assemblies are completely shock proof.



Barrier type Terminal Block CBS Series for quick wire connection for ring & fork type lugs. Terminals can be interconnected using standard shorting accessories.



CSB series standard stud type terminals can be operated with screw / nut driver. Circuit identification can be achieved with standard marking tags.



High current Bus Bar Terminal Blocks are available upto 185sq.mm cable connections.

# FEED THROUGH TERMINAL BLOCKS

STH Series Terminal Blocks are preferred for application where the connections are subjected to severe vibration. The wire is crimped to a ring / fork lug and is screwed on to the flat current bar of the Terminal Block. The fastening nut always remains captive in the hinged plastic carrier. The hinged carrier should be lifted to insert the lugs and then snapped back into position. The nut can then be fastened to complete the connection. The nut can be operated by using a standard screwdriver.

These Terminal Blocks have IP20 (Finger Safe) protection & do not need any additional shrouding.

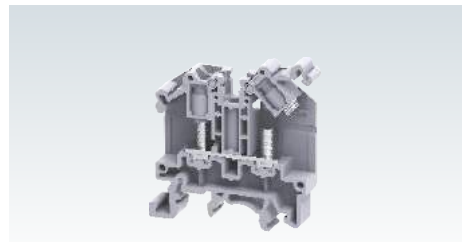
Two Lugs can be connected to the Terminal, without sacrificing the safety of the Terminal Block.

STH4TP terminals have socket headed screws to accept standard Ø 4.3 mm test plugs.

In STH3 & STH6 terminals internal shorting links can be used for cross connection. This is in addition to the available external shorting links.

Width (Thickness) x Length		9 x 47 mm
Height with DIN 35 x 7.5 / 35 x 15 / 32 mm Rail		47.25 mm / 54.75 mm / 52.1 mm
Connection Possibility as per		
With 1 Conductor per clamp	Stranded / Flexible with Ferrule / Lug Solid with Ferrule / Lug	
With 2 same size Conductors per clamp	Stranded / Flexible with Ferrule / Lug	
Ratings As Per		
Voltage		1000 V    600 V    600 V    630 V
Current		41 A    50 A    50 A    36 A
Torque		0.5 Nm    4.5 lb-in    4.5 lb-in    0.5 Nm
Approvals		
Insulation Material / Material Group		Polyamide 6,6 / 1
Rated Impulse Voltage / Pollution Degree		8 KV / 3

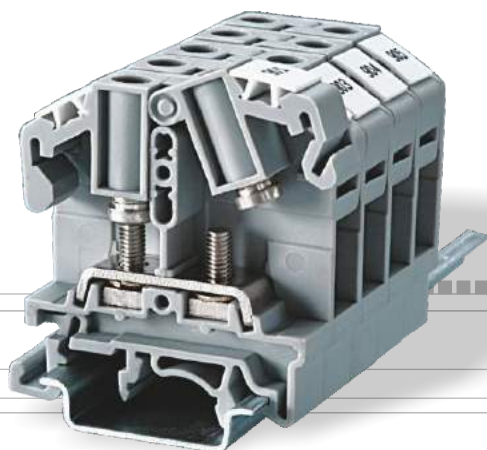
## STH3



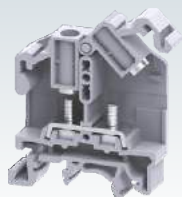
9 x 47 mm			
47.25 mm / 54.75 mm / 52.1 mm			
IEC		UL - CSA	
1.5 - 6.0 mm <sup>2</sup>		22 - 8 AWG	
1.5 - 6.0 mm <sup>2</sup>		22 - 8 AWG	
1.5 - 6.0 mm <sup>2</sup>		22 - 8 AWG	
IEC60947-7-1	UL-1059	CSA22.2-158	IEC60079-7
1000 V	600 V	600 V	630 V
41 A	50 A	50 A	36 A
0.5 Nm	4.5 lb-in	4.5 lb-in	0.5 Nm
Polyamide 6,6 / 1			
8 KV / 3			

Terminal Block	With Standard Screw With Socket Headed Screw	
End Plate		
Mounting Rail	(Refer Pg. 219 for details)	
End Clamp	(Refer Pg. 220 for details)	
Marking Tags	(Refer Pg. 224 for details)	
Screw Driver		
Stud Size		M3
<b>Shorting Links</b>		
Removable Shorting Links		2 pole
		3 pole
		4 pole
Permanent Shorting Links		2 pole
		3 pole
		4 pole
Pre Assembled Shorting Links		2 pole
		3 pole
		4 pole
		10 pole

Type / Cat. No.	Standard Pack		
STH3	10		
EPSTH3	50		
CA701-1M / CA701-1M-S	50 m		
CA701-15-1M / CA701-15-1M-S	25 m		
CA702 / CA802	50		
CA509/K8WHT	100		
SCS0.8/4	Blade size: 0.8 x 4 mm		
	10		
	M3		
Uninsulated	Insulated	I <sub>max</sub>	Standard Pack
CA512/15-2	CA514/15-2	35 A	100
CA512/15-3	CA514/15-3	35 A	50
CA512/15-4	CA514/15-4	35 A	50
CA512/17-2	CA514/17-2	35 A	100
CA512/17-3	CA514/17-3	35 A	50
CA512/17-4	CA514/17-4	35 A	50
CA773/2		41 A	100
CA773/3		41 A	50
CA773/4		41 A	50
CA773/10		41 A	10



**STH4 / STH4TP**

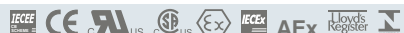


11 x 46 mm  
52.2 mm / 59.0 mm / 56.4 mm

IEC	UL - CSA
1.5 - 6.0 mm <sup>2</sup>	22 - 8 AWG

1.5 - 6.0 mm <sup>2</sup>	22 - 8 AWG
---------------------------	------------

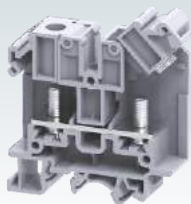
IEC60947-7-1	UL-1059	CSA22.2-158	IEC60079-7
1000 V	600 V	600 V	500 V
41 A	50 A	50 A	36 A
1.2 Nm	14 lb-in	14 lb-in	1.2 Nm



Polyamide 6,6 / 1

8 KV / 3

**STH6**



18 x 63.5 mm  
63.1 mm / 70.6 mm / 68 mm

IEC	UL - CSA
1.5 - 35.0 mm <sup>2</sup>	22 - 2 AWG

1.5 - 35.0 mm <sup>2</sup>	22 - 2 AWG
----------------------------	------------

IEC60947-7-1	UL-1059	CSA22.2-158	IEC60079-7
1000 V	600 V	600 V	630 V
125 A	115 A	115 A	110 A
3.0 Nm	25 lb-in	25 lb-in	2.5 Nm



Polyamide 6,6 / 1

8 KV / 3

Type / Cat. No.	Standard Pack
STH4	50
STH4TP	50
EPSTH4	50
CA701-1M / CA701-1M-S	50 m
CA701-15-1M / CA701-15-1M-S	25 m
CA702 / CA802	50
CA509/K10WHT	100
SCS0.8/4 Blade size: 0.8 x 4 mm	10

M4

Uninsulated	Insulated	I <sub>max</sub>	Standard Pack
CA512/13-2	CA514/13-2	35 A	100
CA512/13-3	CA514/13-3	35 A	50
CA512/13-4	CA514/13-4	35 A	50
CA512/14-2	CA514/14-2	35 A	100
CA512/14-3	CA514/14-3	35 A	50
CA512/14-4	CA514/14-4	35 A	50

Type / Cat. No.	Standard Pack
STH6	50
EPSTH6	50
CA701-1M / CA701-1M-S	50 m
CA701-15-1M / CA701-15-1M-S	25 m
CA702 / CA802 / CA202	50
CA509/K16WHT	100
SCS1/5.5 Blade size: 1.0 x 5.5 mm	10

M6

Uninsulated	Insulated	I <sub>max</sub>	Standard Pack
CA774/2		110 A	100
CA774/3		110 A	50
CA774/4		110 A	50

# FEED THROUGH TERMINAL BLOCKS

CBS3U, CBS4U & CBS5U are barrier type Terminal Blocks for quick wire connection of ring & fork type lugs / ferrules.

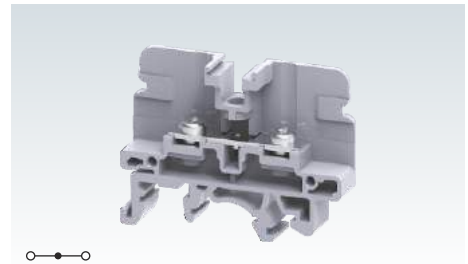
CSB3/N3U, CSB4/N4U & CSB5/N5U terminals are standard stud type terminals. CSB3/N3UL terminal has longer barrel nut for better access. The terminals can be operated using either a screw driver or a nut driver.

All the terminals can be shorted using both external & internal shorting links.

CSB3/N3USH, CSB4/N4USH, CSB5/N5USH & CSTSN6USH are the same profile stud type Terminal Blocks. These Terminal Blocks are with hinged carrier which should be lifted to insert the lugs and make the connection and then snapped back into position. These Terminal Blocks have IP 20 (Finger safe) protection and do not need any additional shrouding.

CSE5U Terminal Block is used for earth link disconnection application. The Terminal Block can be operated using nut driver.

## CBS3U

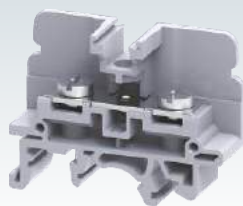


Width (Thickness) x Length		9 x 49 mm			
Height with DIN 35 x 7.5 / 35 x 15 / 32 mm Rail		38 mm / 45.6 mm / 43.1 mm			
Connection Possibility as per		IEC		UL - CSA	
With 1 Conductor per clamp	Stranded / Flexible with Ferrule / Lug	0.5 - 6.0 mm <sup>2</sup>		22 - 8 AWG	
With 2 same size Conductors per clamp	Stranded / Flexible with Ferrule / Lug	0.5 - 4.0 mm <sup>2</sup>		22 - 10 AWG	
Ratings As Per		IEC60947-7-1	UL-1059	CSA22.2-158	IEC60079-7
Voltage		1100 V	600 V	600 V	500 V
Current		41 A	50 A	50 A	36 A
Torque		0.5 Nm	4.5 lb-in	4.5 lb-in	0.5 Nm
Approvals					
Insulation Material / Material Group		Polyamide 6,6 / 1			
Rated Impulse Voltage / Pollution Degree		8 KV / 3			

		Type / Cat. No.	Standard Pack
Terminal Block	Grey	CBS3U	100
End Plate		EPCBS3U	50
Mounting Rail	(Refer Pg. 219 for details)	CA701-1M / CA701-1M-S	50 m
		CA701-15-1M / CA701-15-1M-S	25 m
End Clamp	(Refer Pg. 220 for details)	CA702 / CA802	50
Marking Tags	(Refer Pg. 224 for details)	CA509/K9WHT	100
Screw Driver		SCPH2	10
Nut Driver			
Screw / Stud Size		M3	

Shorting Links			Uninsulated	Insulated	I <sub>max</sub>	Standard Pack
Removable Shorting Links		2 pole	CA512/15-2	CA514/15-2	35 A	100
		3 pole	CA512/15-3	CA514/15-3	35 A	50
		4 pole	CA512/15-4	CA514/15-4	35 A	50
Permanent Shorting Links		2 pole	CA512/17-2	CA514/17-2	35 A	100
		3 pole	CA512/17-3	CA514/17-3	35 A	50
		4 pole	CA512/17-4	CA514/17-4	35 A	50
Pre Assembled Shorting Links		2 pole	CA728/2		41 A	50
		3 pole	CA728/3		41 A	50
		4 pole	CA728/4		41 A	50
		10 pole	CA728/10		41 A	10
Protective Cover (Polycarbonate)		2 Terminal	CSTSPC2			10
		3 Terminal	CSTSPC2-1			10
		4 Terminal				
Long Protective Cover (Acrylic)		100 mm	CSTSPC1-2			10
		200 mm	CSTSPC1-3			10
		300 mm	CSTSPC1-4			10

**CBS4U**



13 x 49 mm

38 mm / 45.6 mm / 43.1 mm

IEC UL - CSA

1.5 - 10.0 mm<sup>2</sup> 16 - 6 AWG

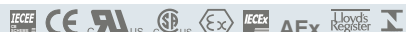
1.5 - 6.0 mm<sup>2</sup> 16 - 8 AWG

IEC60947-7-1 UL-1059 CSA22.2-158 IEC60079-7

1100 V 600 V 600 V 500 V

57 A 65 A 65 A 52 A

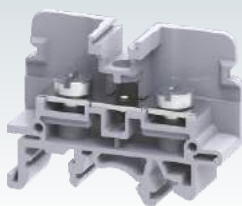
1.2 Nm 10 lb-in 10 lb-in 1.2 Nm



Polyamide 6,6 / 1

8 KV / 3

**CBS5U**



13 x 49 mm

38 mm / 45.6 mm / 43.1 mm

IEC UL - CSA

1.5 - 16.0 mm<sup>2</sup> 16 - 4 AWG

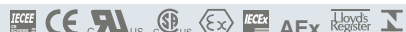
1.5 - 10.0 mm<sup>2</sup> 16 - 6 AWG

IEC60947-7-1 UL-1059 CSA22.2-158 IEC60079-7

1100 V 600 V 600 V 630 V

76 A 85 A 85 A 68 A

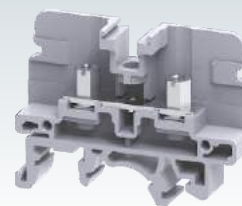
2.0 Nm 25 lb-in 25 lb-in 2.0 Nm



Polyamide 6,6 / 1

8 KV / 3

**CSB3/N3U**



9 x 49 mm

38 mm / 45.6 mm / 43.1 mm

IEC UL - CSA

0.5 - 6.0 mm<sup>2</sup> 22 - 8 AWG

0.5 - 4.0 mm<sup>2</sup> 22 - 10 AWG

IEC60947-7-1 UL-1059 CSA22.2-158 IEC60079-7

1100 V 600 V 600 V 500 V

41 A 50 A 50 A 36 A

0.5 Nm 4.5 lb-in 4.5 lb-in 0.5 Nm



Polyamide 6,6 / 1

8 KV / 3

Type / Cat. No.	Standard Pack
CBS4U	100
EPCBS3U	50
CA701-1M / CA701-1M-S	50 m
CA701-15-1M / CA701-15-1M-S	25 m
CA702 / CA802	50
CA509/K9WHT	100
SCPH2	10
M4	

Type / Cat. No.	Standard Pack
CBS5U	100
EPCBS3U	50
CA701-1M / CA701-1M-S	50 m
CA701-15-1M / CA701-15-1M-S	25 m
CA702 / CA802	50
CA509/K9WHT	100
SCPH2	10
M4	

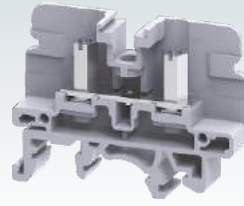
Type / Cat. No.	Standard Pack
CSB3/N3U	100
EPCBS3U	50
CA701-1M / CA701-1M-S	50 m
CA701-15-1M / CA701-15-1M-S	25 m
CA702 / CA802	50
CA509/K9WHT	100
SCS1/5.5 Blade size: 1.0 x 5.5 mm	10
SCNT5	10
M3	

Uninsulated	Insulated	I <sub>max</sub>	Standard Pack
CA512/2-2	CA514/2-2	45 A	100
CA512/2-3	CA514/2-3	45 A	50
CA512/2-4	CA514/2-4	45 A	50
CA512/4-2	CA514/4-2	45 A	100
CA512/4-3	CA514/4-3	45 A	50
CA512/4-4	CA514/4-4	45 A	50
CA772/2		57 A	100
CA772/3		57 A	100
CA772/4		57 A	100
CA772/10		57 A	10
CSTSPC2			10
CSTSPC2-1			10
CSTSPC1-2			10
CSTSPC1-3			10
CSTSPC1-4			10

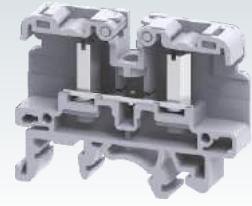
Uninsulated	Insulated	I <sub>max</sub>	Standard Pack
CA512/2-2	CA514/2-2	45 A	100
CA512/2-3	CA514/2-3	45 A	50
CA512/2-4	CA514/2-4	45 A	50
CA512/4-2	CA514/4-2	45 A	100
CA512/4-3	CA514/4-3	45 A	50
CA512/4-4	CA514/4-4	45 A	50
CA772/2		60 A	100
CA772/3		60 A	100
CA772/4		60 A	100
CA772/10		60 A	10
CSTSPC2			10
CSTSPC2-1			10
CSTSPC1-2			10
CSTSPC1-3			10
CSTSPC1-4			10

Uninsulated	Insulated	I <sub>max</sub>	Standard Pack
CA512/15-2	CA514/15-2	35 A	100
CA512/15-3	CA514/15-3	35 A	50
CA512/15-4	CA514/15-4	35 A	50
CA512/17-2	CA514/17-2	35 A	100
CA512/17-3	CA514/17-3	35 A	50
CA512/17-4	CA514/17-4	35 A	50
CA728/2		41 A	50
CA728/3		41 A	50
CA728/4		41 A	50
CA728/10		41 A	10
CSTSPC2			10
CSTSPC2-1			10
CSTSPC1-2			10
CSTSPC1-3			10
CSTSPC1-4			10

CSB3/N3UL



CSB3/N3USH



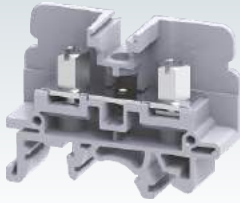
Width (Thickness) x Length	9 x 49 mm				9 x 49 mm			
Height with DIN 35 x 7.5 / 35 x 15 / 32 mm Rail	38 mm / 45.6 mm / 43.1 mm				38 mm / 45.6 mm / 43.1 mm			
Connection Possibility as per	IEC		UL - CSA		IEC		UL - CSA	
With 1 Conductor per clamp	Stranded / Flexible with Ferrule / Lug		0.5 - 6.0 mm <sup>2</sup>		22 - 8 AWG		0.5 - 6.0 mm <sup>2</sup>	
With 2 same size Conductors per clamp	Stranded / Flexible with Ferrule / Lug		0.5 - 4.0 mm <sup>2</sup>		22 - 10 AWG		0.5 - 4.0 mm <sup>2</sup>	
Ratings As Per	IEC60947-7-1	UL-1059	CSA22.2-158	IEC60079-7	IEC60947-7-1	UL-1059	CSA22.2-158	IEC60079-7
Voltage	800 V	600 V	600 V	500 V	800 V	600 V	600 V	500 V
Current	41 A	50 A	50 A	36 A	41 A	50 A	50 A	36 A
Torque	0.5 Nm	4.5 lb-in	4.5 lb-in	0.5 Nm	0.5 Nm	4.5 lb-in	4.5 lb-in	0.5 Nm
Approvals								
Insulation Material / Material Group	Polyamide 6,6 / 1				Polyamide 6,6 / 1			
Rated Impulse Voltage / Pollution Degree	8 KV / 3				8 KV / 3			

	Type / Cat. No.	Standard Pack	Type / Cat. No.	Standard Pack
Terminal Block	CSB3/N3UL	100	CSB3/N3USH	100
End Plate	EPCBS3U	50	EPCBS3U	50
Mounting Rail (Refer Pg. 219 for details)	CA701-1M / CA701-1M-S	50 m	CA701-1M / CA701-1M-S	50 m
	CA701-15-1M / CA701-15-1M-S	25 m	CA701-15-1M / CA701-15-1M-S	25 m
End Clamp (Refer Pg. 220 for details)	CA702 / CA802	50	CA702 / CA802	50
Marking Tags (Refer Pg. 224 for details)	CA509/K9WHT	100	CA509/K9WHT	100
Screw Driver	SCS1/5.5 Blade size: 1.0 x 5.5 mm	10	SCS1/5.5 Blade size: 1.0 x 5.5 mm	10
Nut Driver	SCNT5	10	SCNT5	10
Screw / Stud Size	M3		M3	

Shorting Links			Uninsulated	Insulated	I <sub>max</sub>	Standard Pack	Uninsulated	Insulated	I <sub>max</sub>	Standard Pack
Removable Shorting Links		2 pole	CA512/15-2	CA514/15-2	35 A	100	CA512/15-2	CA514/15-2	35 A	100
		3 pole	CA512/15-3	CA514/15-3	35 A	50	CA512/15-3	CA514/15-3	35 A	50
		4 pole	CA512/15-4	CA514/15-4	35 A	50	CA512/15-4	CA514/15-4	35 A	50
Permanent Shorting Links		2 pole	CA512/17-2	CA514/17-2	35 A	100	CA512/17-2	CA514/17-2	35 A	100
		3 pole	CA512/17-3	CA514/17-3	35 A	50	CA512/17-3	CA514/17-3	35 A	50
		4 pole	CA512/17-4	CA514/17-4	35 A	50	CA512/17-4	CA514/17-4	35 A	50
Pre Assembled Shorting Links		2 pole	CA728/2		41 A	50	CA728/2		41 A	50
		3 pole	CA728/3		41 A	50	CA728/3		41 A	50
		4 pole	CA728/4		41 A	50	CA728/4		41 A	50
		10 pole	CA728/10		41 A	10	CA728/10		41 A	10
Protective Cover (Polycarbonate)		2 Terminal								
		3 Terminal	CSTSPC2			10	CSTSPC2			10
		4 Terminal	CSTSPC2-1			10	CSTSPC2-1			10
Long Protective Cover (Acrylic)		100 mm	CSTSPC1-2			10	CSTSPC1-2			10
		200 mm	CSTSPC1-3			10	CSTSPC1-3			10
		200 mm	CSTSPC1-3			10	CSTSPC1-3			10
		300 mm	CSTSPC1-4			10	CSTSPC1-4			10



**CSB4/N4U**



13 x 49 mm

38 mm / 45.6 mm / 43.1 mm

IEC	UL - CSA
-----	----------

1.5 - 10.0 mm <sup>2</sup>	16 - 6 AWG
----------------------------	------------

1.5 - 6.0 mm <sup>2</sup>	16 - 8 AWG
---------------------------	------------

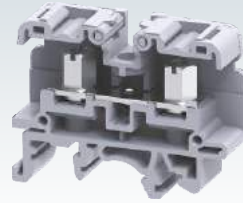
IEC60947-7-1	UL-1059	CSA22.2-158	IEC60079-7
1100 V	600 V	600 V	500 V
57 A	65 A	65 A	51 A
1.2 Nm	10 lb-in	10 lb-in	1.2 Nm



Polyamide 6,6 / 1

8 KV / 3

**CSB4/N4USH**



13 x 49 mm

38 mm / 45.6 mm / 43.1 mm

IEC	UL - CSA
-----	----------

1.5 - 10.0 mm <sup>2</sup>	16 - 6 AWG
----------------------------	------------

1.5 - 6.0 mm <sup>2</sup>	16 - 8 AWG
---------------------------	------------

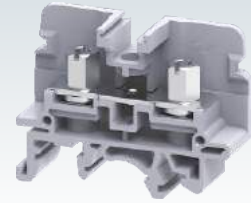
IEC60947-7-1	UL-1059	CSA22.2-158	IEC60079-7
1100 V	600 V	600 V	500 V
57 A	65 A	65 A	51 A
1.2 Nm	10 lb-in	10 lb-in	1.2 Nm



Polyamide 6,6 / 1

8 KV / 3

**CSB5/N5U**



13 x 49 mm

38 mm / 45.6 mm / 43.1 mm

IEC	UL - CSA
-----	----------

1.5 - 16.0 mm <sup>2</sup>	16 - 4 AWG
----------------------------	------------

1.5 - 10.0 mm <sup>2</sup>	16 - 6 AWG
----------------------------	------------

IEC60947-7-1	UL-1059	CSA22.2-158	IEC60079-7
1100 V	600 V	600 V	630 V
76 A	85 A	85 A	68 A
2.0 Nm	25 lb-in	25 lb-in	2.0 Nm



Polyamide 6,6 / 1

8 KV / 3

Type / Cat. No.	Standard Pack
CSB4/N4U	100
EPCBS3U	50
CA701-1M / CA701-1M-S	50 m
CA701-15-1M / CA701-15-1M-S	25 m
CA702 / CA802	50
CA509/K9WHT	100
SCS1/5.5 Blade size: 1.0 x 5.5 mm	10

M4

Type / Cat. No.	Standard Pack
CSB4/N4USH	100
EPCBS3U	50
CA701-1M / CA701-1M-S	50 m
CA701-15-1M / CA701-15-1M-S	25 m
CA702 / CA802	50
CA509/K9WHT	100
SCS1/5.5 Blade size: 1.0 x 5.5 mm	10

M4

Type / Cat. No.	Standard Pack
CSB5/N5U	100
EPCBS3U	50
CA701-1M / CA701-1M-S	50 m
CA701-15-1M / CA701-15-1M-S	25 m
CA702 / CA802	50
CA509/K9WHT	100
SCS1/5.5 Blade size: 1.0 x 5.5 mm	10

M5

Uninsulated	Insulated	I <sub>max</sub>	Standard Pack
CA512/2-2	CA514/2-2	45 A	100
CA512/2-3	CA514/2-3	45 A	50
CA512/2-4	CA514/2-4	45 A	50
CA512/4-2	CA514/4-2	45 A	100
CA512/4-3	CA514/4-3	45 A	50
CA512/4-4	CA514/4-4	45 A	50
CA772/2		57 A	100
CA772/3		57 A	100
CA772/4		57 A	100
CA772/10		57 A	10
CSTSPC2			10
CSTSPC2-1			10
CSTSPC1-2			10
CSTSPC1-3			10
CSTSPC1-4			10

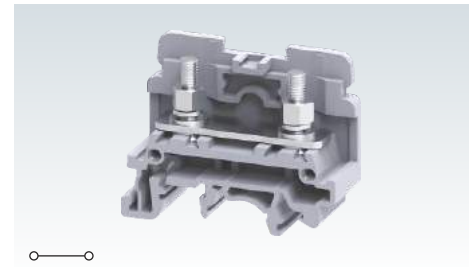
Uninsulated	Insulated	I <sub>max</sub>	Standard Pack
CA512/2-2	CA514/2-2	45 A	100
CA512/2-3	CA514/2-3	45 A	50
CA512/2-4	CA514/2-4	45 A	50
CA512/4-2	CA514/4-2	45 A	100
CA512/4-3	CA514/4-3	45 A	50
CA512/4-4	CA514/4-4	45 A	50
CA772/2		57 A	100
CA772/3		57 A	100
CA772/4		57 A	100
CA772/10		57 A	10
CSTSPC2			10
CSTSPC2-1			10
CSTSPC1-2			10
CSTSPC1-3			10
CSTSPC1-4			10

Uninsulated	Insulated	I <sub>max</sub>	Standard Pack
CA512/2-2	CA514/2-2	45 A	100
CA512/2-3	CA514/2-3	45 A	50
CA512/2-4	CA514/2-4	45 A	50
CA512/4-2	CA514/4-2	45 A	100
CA512/4-3	CA514/4-3	45 A	50
CA512/4-4	CA514/4-4	45 A	50
CA772/2		60 A	100
CA772/3		60 A	100
CA772/4		60 A	100
CA772/10		60 A	10
CSTSPC2			10
CSTSPC2-1			10
CSTSPC1-2			10
CSTSPC1-3			10
CSTSPC1-4			10

**CSB5/N5USH**



**CSTSN4U**

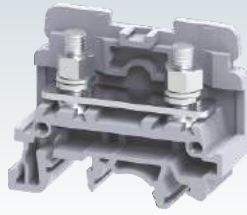


Width (Thickness) x Length	13 x 49 mm				17 x 50 mm			
Height with DIN 35 x 7.5 / 35 x 15 / 32 mm Rail	38 mm / 45.6 mm / 43.1 mm				40.7 mm / 48.0 mm / 46.3 mm			
Connection Possibility as per	IEC		UL - CSA		IEC		UL - CSA	
With 1 Conductor per clamp	Stranded / Flexible with Ferrule / Lug		1.5 - 16.0 mm <sup>2</sup>		16 - 4 AWG		1.5 - 10.0 mm <sup>2</sup>	
With 2 same size Conductors per clamp	Stranded / Flexible with Ferrule / Lug		1.5 - 10.0 mm <sup>2</sup>		16 - 6 AWG		1.5 - 10.0 mm <sup>2</sup>	
Ratings As Per	IEC60947-7-1	UL-1059	CSA22.2-158	IEC60079-7	IEC60947-7-1	UL-1059	CSA22.2-158	
Voltage	1100 V	600 V	600 V	630 V	1000 V	600 V	600 V	
Current	76 A	85 A	85 A	68 A	57 A	65 A	65 A	
Torque	2.0 Nm	25 lb-in	25 lb-in	2.0 Nm	1.2 Nm	14 lb-in	14 lb-in	
Approvals								
Insulation Material / Material Group	Polyamide 6,6 / 1				Polyamide 6,6 / 1			
Rated Impulse Voltage / Pollution Degree	8 KV / 3				8 KV / 3			

	Type / Cat. No.	Standard Pack	Type / Cat. No.	Standard Pack
Terminal Block	CSB5/N5USH	100	CSTSN4U	100
End Plate	EPCBS3U	50	EPCSTSU	50
Mounting Rail (Refer Pg. 219 for details)	CA701-1M / CA701-1M-S	50 m	CA701-1M / CA701-1M-S	50 m
	CA701-15-1M / CA701-15-1M-S	25 m	CA701-15-1M / CA701-15-1M-S	25 m
End Clamp (Refer Pg. 220 for details)	CA702 / CA802	50	CA702 / CA802	50
Marking Tags (Refer Pg. 224 for details)	CA509/K9WHT	100	CA509/K2B4WHT	100
Screw Driver	SCS1/5.5	Blade size: 1.0 x 5.5 mm		
Nut Driver				
Screw / Stud Size	M5		M4	

Shorting Links			Uninsulated	Insulated	I <sub>max</sub>	Standard Pack	Uninsulated	Insulated	I <sub>max</sub>	Standard Pack
Removable Shorting Links	2 pole	CA512/2-2	CA514/2-2	45 A	100	CA512/1-2	CA514/1-2	45 A	100	
	3 pole	CA512/2-3	CA514/2-3	45 A	50	CA512/1-3	CA514/1-3	45 A	50	
	4 pole	CA512/2-4	CA514/2-4	45 A	50	CA512/1-4	CA514/1-4	45 A	50	
Permanent Shorting Links	2 pole	CA512/4-2	CA514/4-2	45 A	100	CA512/3-2	CA514/3-2	45 A	100	
	3 pole	CA512/4-3	CA514/4-3	45 A	50	CA512/3-3	CA514/3-3	45 A	50	
	4 pole	CA512/4-4	CA514/4-4	45 A	50	CA512/3-4	CA514/3-4	45 A	50	
Pre Assembled Shorting Links	2 pole	CA772/2		60 A	100					
	3 pole	CA772/3		60 A	100					
	4 pole	CA772/4		60 A	100					
	10 pole	CA772/10		60 A	10					
Protective Cover (Polycarbonate)	2 Terminal	CSTSPC2			10	CSTSPC1			100	
	3 Terminal	CSTSPC2-1			10	CSTSPC1-1			100	
	4 Terminal									
Long Protective Cover (Acrylic)	100 mm	CSTSPC1-2			10	CSTSPC1-2			10	
	200 mm	CSTSPC1-3			10	CSTSPC1-3			10	
	300 mm	CSTSPC1-4			10	CSTSPC1-4			10	

**CSTSN5U**



17 x 50 mm  
40.7 mm / 48.0 mm / 46.3 mm

IEC	UL - CSA
-----	----------

1.5 - 16.0 mm <sup>2</sup>	22 - 4 AWG
----------------------------	------------

1.5 - 16.0 mm <sup>2</sup>	22 - 4 AWG
----------------------------	------------

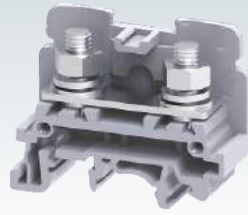
IEC60947-7-1	UL-1059	CSA22.2-158
1000 V	600 V	600 V
76 A	80 A	80 A
2.0 Nm	25 lb-in	25 lb-in



Polyamide 6,6 / 1

8 KV / 3

**CSTSN6U**



17 x 50 mm  
40.7 mm / 48.0 mm / 46.3 mm

IEC	UL - CSA
-----	----------

1.5 - 35.0 mm <sup>2</sup>	22 - 2 AWG
----------------------------	------------

1.5 - 35.0 mm <sup>2</sup>	22 - 2 AWG
----------------------------	------------

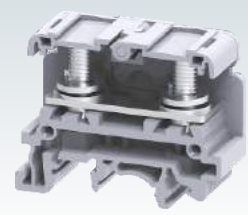
IEC60947-7-1	UL-1059	CSA22.2-158
1000 V	600 V	600 V
125 A	125 A	125 A
3.0 Nm	25 lb-in	25 lb-in



Polyamide 6,6 / 1

8 KV / 3

**CSTSN6USH**



17 x 50 mm  
40.7 mm / 48.0 mm / 46.3 mm

IEC	UL - CSA
-----	----------

1.5 - 35.0 mm <sup>2</sup>	22 - 2 AWG
----------------------------	------------

1.5 - 35.0 mm <sup>2</sup>	22 - 2 AWG
----------------------------	------------

IEC60947-7-1	UL-1059	CSA22.2-158
1000 V	600 V	600 V
125 A	125 A	125 A
3.0 Nm	25 lb-in	25 lb-in



Polyamide 6,6 / 1

8 KV / 3

Type / Cat. No.	Standard Pack
CSTSN5U	100
EPCSTSU	50
CA701-1M / CA701-1M-S	50 m
CA701-15-1M / CA701-15-1M-S	25 m
CA702 / CA802	50
CA509/K2B4WHT	100

M5

Type / Cat. No.	Standard Pack
CSTSN6U	100
EPCSTSU	50
CA701-1M / CA701-1M-S	50 m
CA701-15-1M / CA701-15-1M-S	25 m
CA702 / CA802	50
CA509/K2B4WHT	100

M6

Type / Cat. No.	Standard Pack
CSTSN6USH	100
EPCSTSU	50
CA701-1M / CA701-1M-S	50 m
CA701-15-1M / CA701-15-1M-S	25 m
CA702 / CA802	50
CA509/K2B4WHT	100

M6

Uninsulated	Insulated	I <sub>max</sub>	Standard Pack
CA512/1-2	CA514/1-2	45 A	100
CA512/1-3	CA514/1-3	45 A	50
CA512/1-4	CA514/1-4	45 A	50
CA512/3-2	CA514/3-2	45 A	100
CA512/3-3	CA514/3-3	45 A	50
CA512/3-4	CA514/3-4	45 A	50

Uninsulated	Insulated	I <sub>max</sub>	Standard Pack
CA512/7-2	CA514/7-2	50 A	100
CA512/7-3	CA514/7-3	50 A	50
CA512/7-4	CA514/7-4	50 A	50
CA512/8-2	CA514/8-2	50 A	100
CA512/8-3	CA514/8-3	50 A	50
CA512/8-4	CA514/8-4	50 A	50

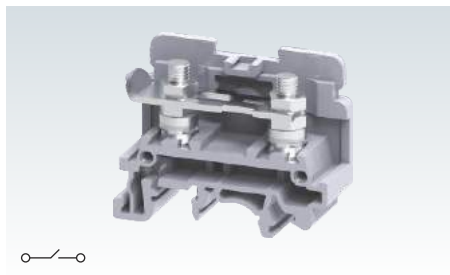
Uninsulated	Insulated	I <sub>max</sub>	Standard Pack
CA512/7-2	CA514/7-2	50 A	100
CA512/7-3	CA514/7-3	50 A	50
CA512/7-4	CA514/7-4	50 A	50
CA512/8-2	CA514/8-2	50 A	100
CA512/8-3	CA514/8-3	50 A	50
CA512/8-4	CA514/8-4	50 A	50

CSTSPC1	100
CSTSPC1-1	100
CSTSPC1-2	10
CSTSPC1-3	10
CSTSPC1-4	10

CSTSPC1	100
CSTSPC1-1	100
CSTSPC1-2	10
CSTSPC1-3	10
CSTSPC1-4	10

CSTSPC1	100
CSTSPC1-1	100
CSTSPC1-2	10
CSTSPC1-3	10
CSTSPC1-4	10

CSE5U



Width (Thickness) x Length		17 x 50 mm	
Height with DIN 35 x 7.5 / 35 x 15 / 32 mm Rail		40.7 mm / 48.0 mm / 46.3 mm	
Connection Possibility as per		IEC	UL - CSA
With 1 Conductor per clamp	Stranded / Flexible with Ferrule / Lug	1.5 - 16.0 mm <sup>2</sup>	22 - 4 AWG
With 2 same size Conductors per clamp	Stranded / Flexible with Ferrule / Lug	1.5 - 16.0 mm <sup>2</sup>	22 - 4 AWG
Ratings As Per		IEC60947-7-1	
Voltage		800 V	
Current		76 A	
Torque		2.0 Nm	
Approvals		CE	
Insulation Material / Material Group		Polyamide 6,6 / 1	
Rated Impulse Voltage / Pollution Degree			

		Type / Cat. No.	Standard Pack
Terminal Block	Grey	CSE5U*	100
End Plate		EPCSTSU	50
Mounting Rail	(Refer Pg. 219 for details)	CA701-1M / CA701-1M-S CA701-15-1M / CA701-15-1M-S	50 m 25 m
End Clamp	(Refer Pg. 220 for details)	CA702 / CA802	50
Marking Tags	(Refer Pg. 224 for details)	CA509/K2B4WHT	100
Screw Driver		M5	
Nut Driver			
Screw / Stud Size			

Shorting Links		Uninsulated	Insulated	I <sub>max</sub>	Standard Pack	
Removable Shorting Links		2 pole	CA512/1-2	CA514/1-2	45 A	100
		3 pole	CA512/1-3	CA514/1-3	45 A	50
		4 pole	CA512/1-4	CA514/1-4	45 A	50
Permanent Shorting Links		2 pole	CA512/3-2	CA514/3-2	45 A	100
		3 pole	CA512/3-3	CA514/3-3	45 A	50
		4 pole	CA512/3-4	CA514/3-4	45 A	50
Pre Assembled Shorting Links		2 pole				
		3 pole				
		4 pole				
		10 pole				
Protective Cover (Polycarbonate)		2 Terminal				
		3 Terminal				
		4 Terminal				
Long Protective Cover (Acrylic)		100 mm				
		200 mm				
		300 mm				

\* CSE5U Terminal Block is used for earth link disconnection application.

# DISCONNECT & TEST TERMINAL BLOCKS

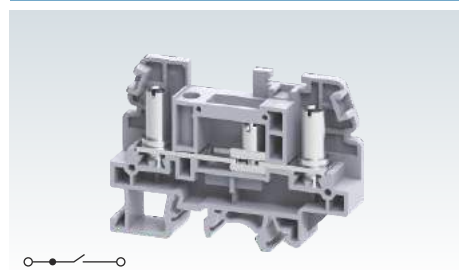
CBDT4U Disconnect & Test Terminal Block is used for measuring, control and regulatory circuits.

Disconnection is achieved by means of a slide link operated with a Screw Driver.

CBDT4U terminals have a barrel nut configuration which can be operated with a screw driver.

Adjacent terminal can be shorted with the aid of removable and permanent shorting link. Also pre assembled internal shorting link can be used for shorting. Temporary shorting can be achieved using SWCBDT switchable link assembly.

## CBDT4U



Width (Thickness) x Length	13 x 71 mm		
Height with DIN 35 x 7.5 / 35 x 15 / 32 mm Rail	50.2 mm / 57.7 mm / 54.8 mm		
Connection Possibility as per	IEC		
With 1 Conductor per clamp	Stranded / Flexible with Ferrule / Lug	UL - CSA	
	Solid with Ferrule / Lug	16 - 8 AWG	
With 2 same size Conductors per clamp	Stranded / Flexible with Ferrule / Lug	16 - 8 AWG	
Ratings As Per	IEC60947-7-1	UL-1059	CSA22.2-158
Voltage	1100 V	600 V	600 V
Current	41 A	45 A	45 A
Torque	1.2 Nm	14 lb-in	14 lb-in
Approvals			
Insulation Material / Material Group	Polyamide 6,6 / 1		
Rated Impulse Voltage / Pollution Degree	8 KV / 3		

		Type / Cat. No.	Standard Pack
Terminal Block	Grey	CBDT4U	50
End Plate		EPCBDT4U	50
Mounting Rail (Refer Pg. 219 for details)		CA701-1M / CA701-1M-S	50 m
		CA701-15-1M / CA701-15-1M-S	25 m
End Clamp (Refer Pg. 220 for details)		CA502 / CA702	50
Marking Tags (Refer Pg. 224 for details)		CA509/K2B4WHT	100
Screw Driver		SCS1/5.5 Blade size: 1.0 x 5.5 mm	10
Screw / Stud Size		M4	

		Uninsulated	Insulated	I <sub>max</sub>	Standard Pack
Removable Shorting Links		CA512/2-2	CA514/2-2	41 A	100
		CA512/2-3	CA514/2-3	41 A	50
		CA512/2-4	CA514/2-4	41 A	50
Permanent Shorting Links		CA512/4-2	CA514/4-2	41 A	100
		CA512/4-3	CA514/4-3	41 A	50
		CA512/4-4	CA514/4-4	41 A	50
Pre Assembled Shorting Links		CA775/2		25 A	100
		CA775/3		25 A	50
		CA775/4		25 A	50
		CA775/10		25 A	10
Protective Cover (Polycarbonate)		CDTPC1			100
		CDTPC2			100
Long Protective Cover (Acrylic)		CDTPC3			10
		CDTPC4			10
		CDTPC5			10
		SWCBDT		41 A	50

# DISCONNECT & TEST TERMINAL BLOCKS

STH4DT Disconnect & Test Terminal Block is used for measuring, control and regulatory circuits. They provide a clear functional advantage for devices having utility instruments and associated transformers.

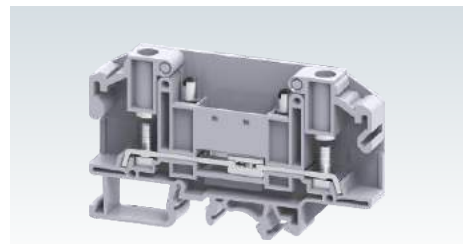
Separate testing points facilitate insertion of test probes. Disconnection is achieved by means of a slide link operated with a Screw Driver.

STH4DTSH Terminal Block has 2 STH4DT Terminal Blocks shorted to achieve switchable cross connection for current transformers (on one side).

STH4DTFT is a feed through terminal with the same profile of the STH4DT Terminal Block.

In all of the above Terminal Blocks, two Lugs can be connected to the Terminal, without sacrificing the safety of the Terminal Block.

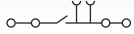
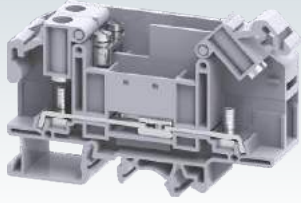
## STH4DT



Width (Thickness) x Length	11 x 86 mm																		
Height with DIN 35 x 7.5 / 35 x 15 / 32 mm Rail	52.2 mm / 59.0 mm / 56.4 mm																		
Connection Possibility as per	<table border="1"> <tr> <th>IEC</th> <th colspan="2">UL - CSA</th> </tr> <tr> <td>1.5 - 6.0 mm<sup>2</sup></td> <td colspan="2">22 - 8 AWG</td> </tr> </table>			IEC	UL - CSA		1.5 - 6.0 mm <sup>2</sup>	22 - 8 AWG											
IEC	UL - CSA																		
1.5 - 6.0 mm <sup>2</sup>	22 - 8 AWG																		
With 1 Conductor per clamp	Stranded / Flexible with Ferrule / Lug Solid with Ferrule / Lug																		
With 2 same size Conductors per clamp	Stranded / Flexible with Ferrule / Lug																		
Ratings As Per	<table border="1"> <tr> <th>IEC60947-7-1</th> <th>UL-1059</th> <th colspan="2">CSA22.2-158</th> </tr> <tr> <td>1000 V</td> <td>600 V</td> <td colspan="2">600 V</td> </tr> <tr> <td>41 A</td> <td>35 A</td> <td colspan="2">35 A</td> </tr> <tr> <td>1.2 Nm</td> <td>14 lb-in</td> <td colspan="2">14 lb-in</td> </tr> </table>			IEC60947-7-1	UL-1059	CSA22.2-158		1000 V	600 V	600 V		41 A	35 A	35 A		1.2 Nm	14 lb-in	14 lb-in	
IEC60947-7-1	UL-1059	CSA22.2-158																	
1000 V	600 V	600 V																	
41 A	35 A	35 A																	
1.2 Nm	14 lb-in	14 lb-in																	
Current	<table border="1"> <tr> <td>41 A</td> <td>35 A</td> <td colspan="2">35 A</td> </tr> </table>			41 A	35 A	35 A													
41 A	35 A	35 A																	
Torque	1.2 Nm    14 lb-in    14 lb-in																		
Approvals																			
Insulation Material / Material Group	Polyamide 6,6 / 1																		
Rated Impulse Voltage / Pollution Degree	8 KV / 3																		

		Type / Cat. No.	Standard Pack		
Terminal Block	With Standard Screw	STH4DT	50		
	With Socket Headed Screw	STH4DT/S	50		
	With Test Socket Tapped	STH4DTTP	50		
End Plate		EPSTH4DT	50		
Mounting Rail	(Refer Pg. 219 for details)	CA701-1M / CA701-1M-S	50 m		
		CA701-15-1M / CA701-15-1M-S	25 m		
End Clamp	(Refer Pg. 220 for details)	CA702 / CA802	50		
Marking Tags	(Refer Pg. 224 for details)	CA509/K10WHT	100		
Screw Driver		SCS1.0/5.5	Blade size: 1.0 x 5.5 mm	10	
Screw / Stud Size		M4			
Shorting Links		Uninsulated	Insulated	I <sub>max</sub>	Standard Pack
Removable Shorting Links		CA512/13-2	CA514/13-2	35 A	100
		CA512/13-3	CA514/13-3	35 A	50
		CA512/13-4	CA514/13-4	35 A	50
Permanent Shorting Links		CA512/14-2	CA514/14-2	35 A	100
		CA512/14-3	CA514/14-3	35 A	50
		CA512/14-4	CA514/14-4	35 A	50
Insulated Alternate Permanent Shorting Links		CA514/14-3A		35 A	10
		CA514/14-4A		35 A	10
Shorting Plug		QJ11/2			25
		QJ11/4			25
Lock Out Cap		LCSTH4DT			50

**STH4DTSH**



22 x 86 mm

52.2 mm / 59.0 mm / 56.4 mm

IEC	UL - CSA
1.5 - 6.0 mm <sup>2</sup>	22 - 8 AWG

1.5 - 6.0 mm<sup>2</sup>      22 - 8 AWG

IEC60947-7-1	UL-1059	CSA22.2-158
1000 V	300 V	300 V
34 A	25 A	25 A
1.2 Nm	14 lb-in	14 lb-in



Polyamide 6,6 / 1

8 KV / 3

Type / Cat. No.	Standard Pack
STH4DTSH	24

EPSTH4DT	50
CA701-1M / CA701-1M-S	50 m
CA701-15-1M / CA701-15-1M-S	25 m
CA702 / CA802	50
CA509/K10WHT	100
SCS1.0/5.5 Blade size: 1.0 x 5.5 mm	10

M4

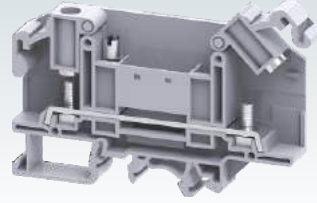
Uninsulated	Insulated	I <sub>max</sub>	Standard Pack
CA512/13-2	CA514/13-2	34 A	100
CA512/13-3	CA514/13-3	34 A	50
CA512/13-4	CA514/13-4	34 A	50
CA512/14-2	CA514/14-2	34 A	100
CA512/14-3	CA514/14-3	34 A	50
CA512/14-4	CA514/14-4	34 A	50

CA514/14-3A	34 A	10
CA514/14-4A	34 A	10

QJ11/2	25
QJ11/4	25

LCSTH4DT	50
----------	----

**STH4DTFT**



11 x 86 mm

52.2 mm / 59.0 mm / 56.4 mm

IEC	UL - CSA
1.5 - 6.0 mm <sup>2</sup>	22 - 8 AWG

1.5 - 6.0 mm<sup>2</sup>      22 - 8 AWG

IEC60947-7-1	UL-1059	CSA22.2-158
1000 V	600 V	300 V
41 A	50 A	50 A
1.2 Nm	14 lb-in	14 lb-in



Polyamide 6,6 / 1

8 KV / 3

Type / Cat. No.	Standard Pack
STH4DTFT	50

EPSTH4DT	50
CA701-1M / CA701-1M-S	50 m
CA701-15-1M / CA701-15-1M-S	25 m
CA702 / CA802	50
CA509/K10WHT	100
SCS1.0/5.5 Blade size: 1.0 x 5.5 mm	10

M4

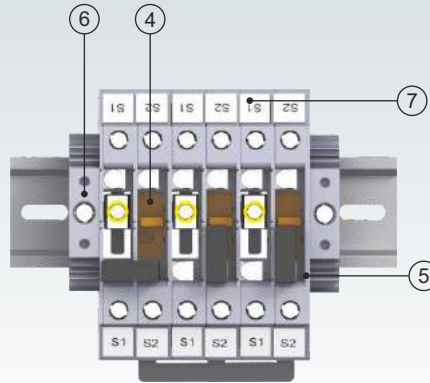
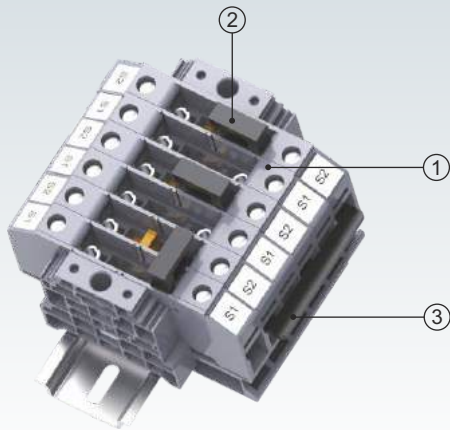
Uninsulated	Insulated	I <sub>max</sub>	Standard Pack
CA512/13-2	CA514/13-2	35 A	100
CA512/13-3	CA514/13-3	35 A	50
CA512/13-4	CA514/13-4	35 A	50
CA512/14-2	CA514/14-2	35 A	100
CA512/14-3	CA514/14-3	35 A	50
CA512/14-4	CA514/14-4	35 A	50

CA514/14-3A	35 A	10
CA514/14-4A	35 A	10

QJ11/2	25
QJ11/4	25

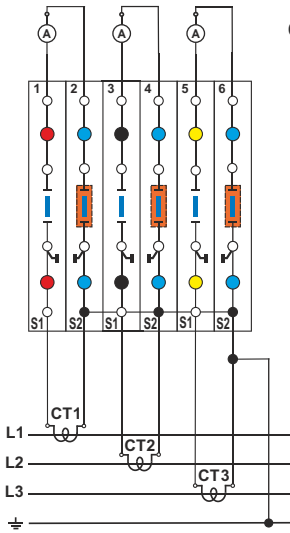
LCSTH4DT	50
----------	----

# Usage of STH4DT Test Disconnect Terminal Block for metering CT for 3 wire system

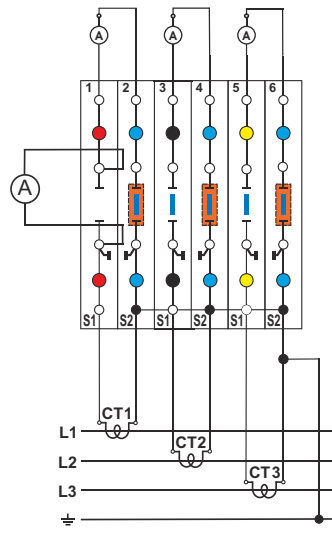


No.	Cat. No.	Qty.
1	STH4DT	6
2	QJ11/2	3
3	CA514/14-3A	1
4	LCSTH4DT	3
5	EPSTH4DT	1
6	CA202	2
7	CA509/K10	12

Operating Status



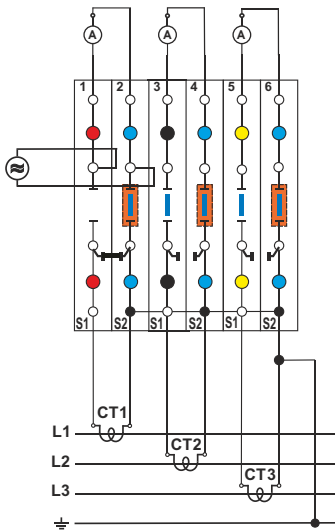
Measurement Standard for Phase L1



**Sequence for test :**

- 1) Connect a Ammeter to test sockets of terminal 1
- 2) Open disconnect slide link of terminal 1
- 3) Take the measurement

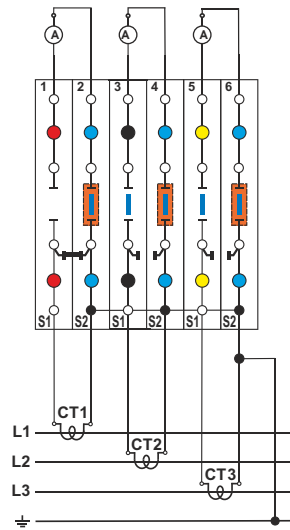
Measurement with External Current Source



**Sequence for test :**

- 1) Close the terminals 1 & 2 with shorting plug QJ11/2
- 2) Open disconnect slide link of terminal 1
- 3) Connect the external source to the test sockets of the terminals 1 & 2.
- 4) Take the measurement

Replacement Meter for Phase L1

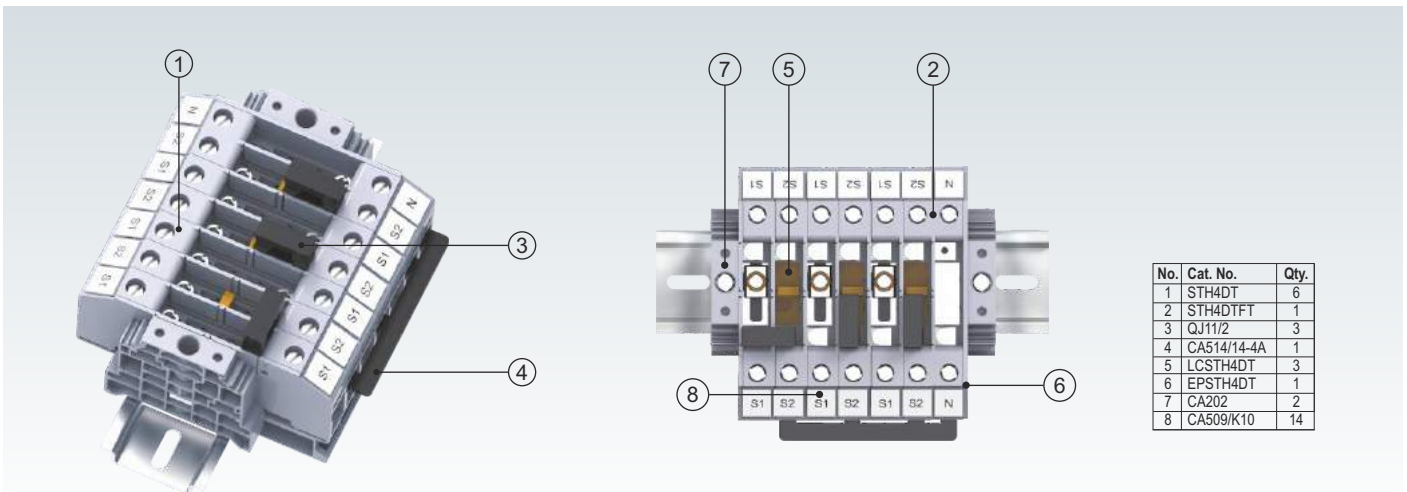


**Sequence for test :**

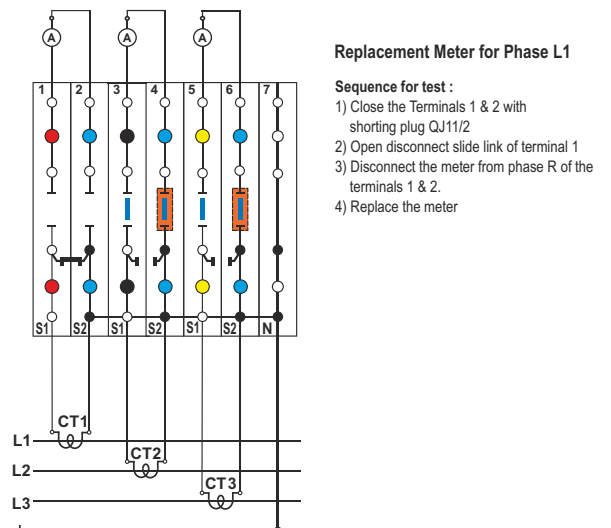
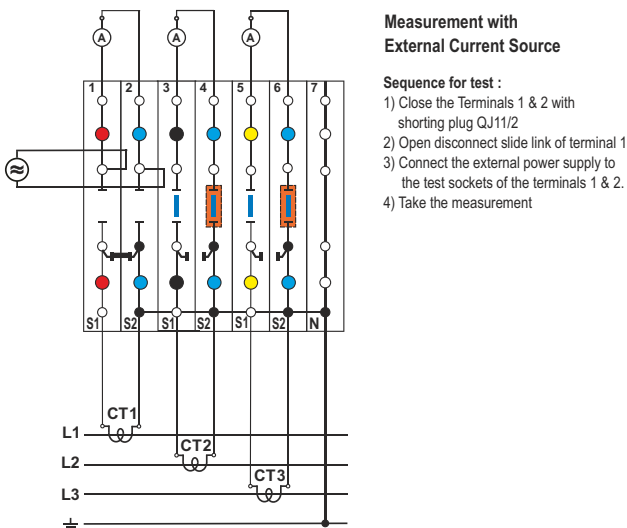
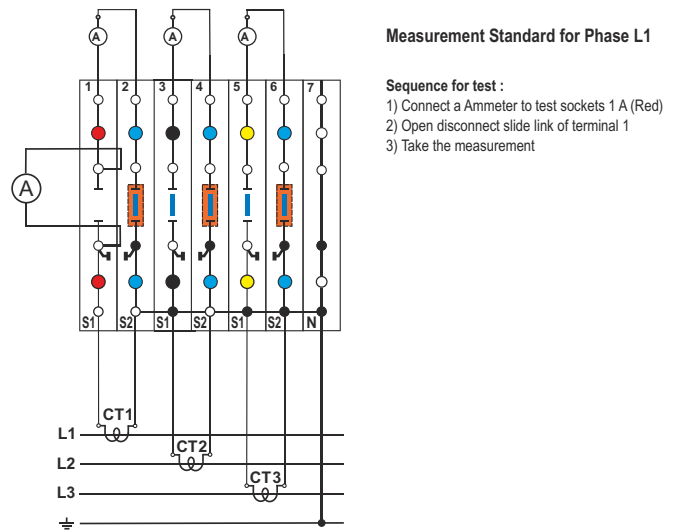
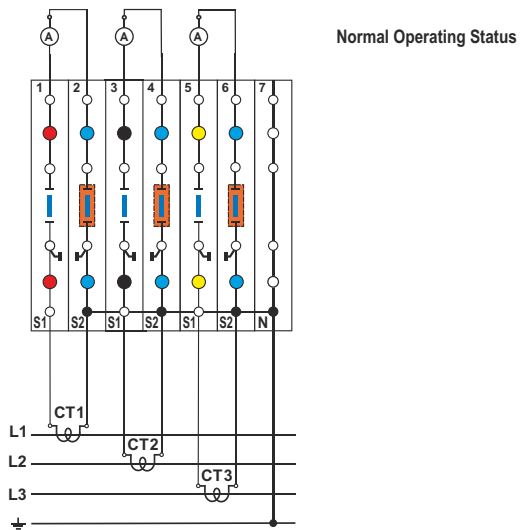
- 1) Close the terminals 1 & 2 with shorting plug QJ11/2
- 2) Open disconnect slide link of terminal 1
- 3) Disconnect the meter from phase R of the terminals 1 & 2.
- 4) Replace the meter



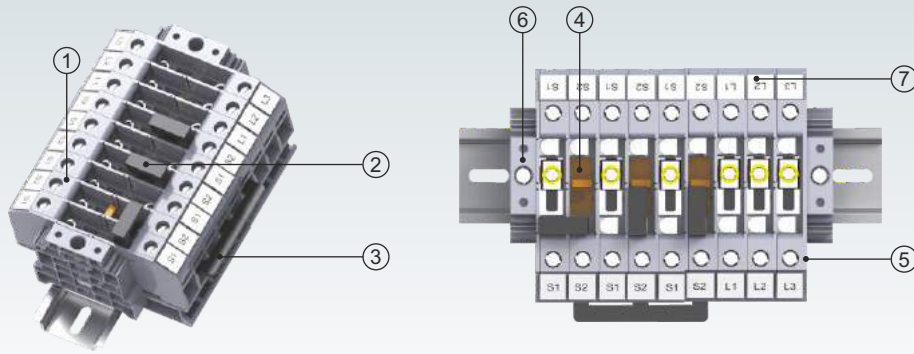
# Usage of STH4DT Test Disconnect Terminal Block for metering CT for 4 wire system



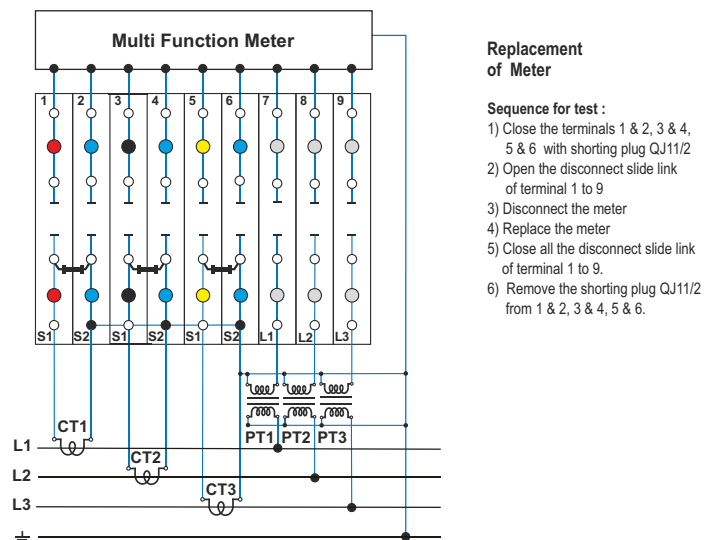
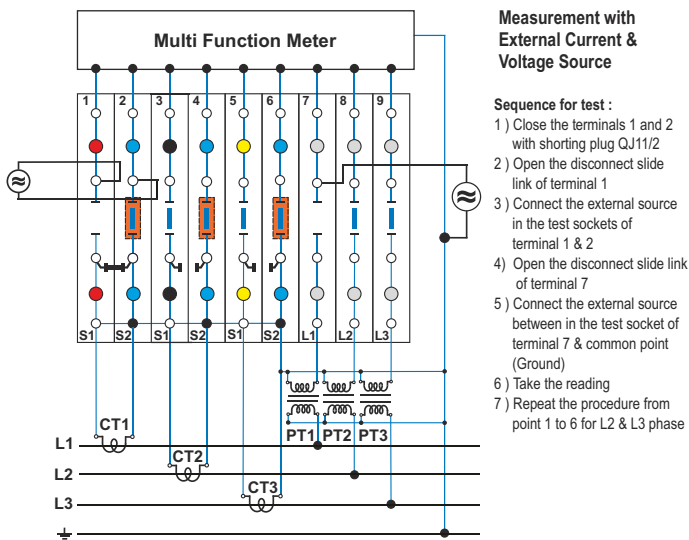
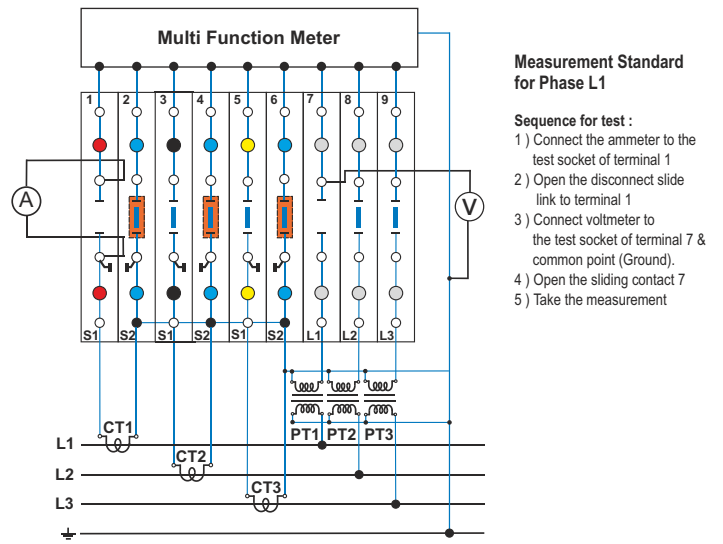
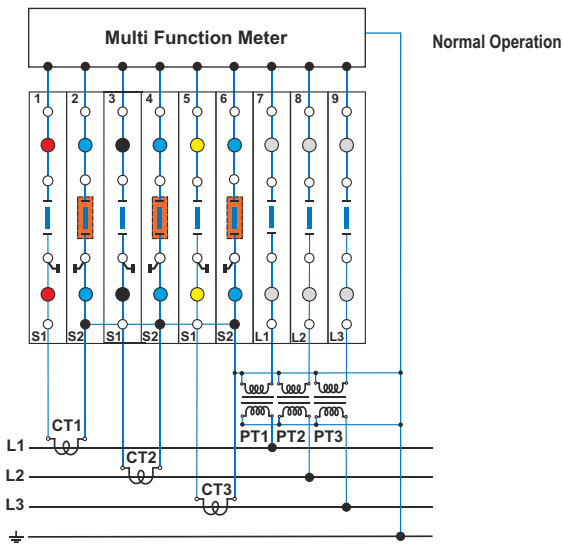
No.	Cat. No.	Qty.
1	STH4DT	6
2	STH4DTFT	1
3	QJ11/2	3
4	CA514/14-4A	1
5	LCSTH4DT	3
6	EPSTH4DT	1
7	CA202	2
8	CA509/K10	14



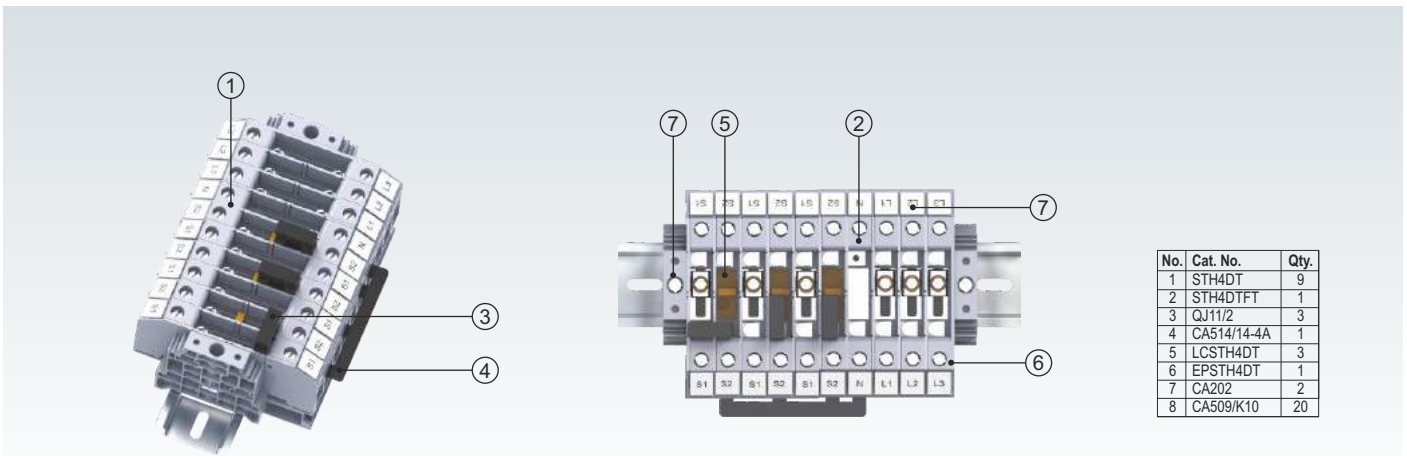
# Usage of STH4DT Test Disconnect Terminal Block for multi function meter for 3 wire system



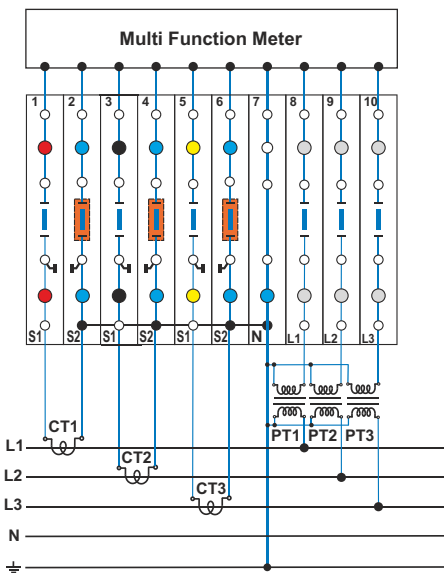
No.	Cat. No.	Qty.
1	STH4DT	9
2	QJ11/2	3
3	CA514/14-3A	1
4	LCSTH4DT	3
5	EPSTH4DT	1
6	CA202	2
7	CA509/K10	18



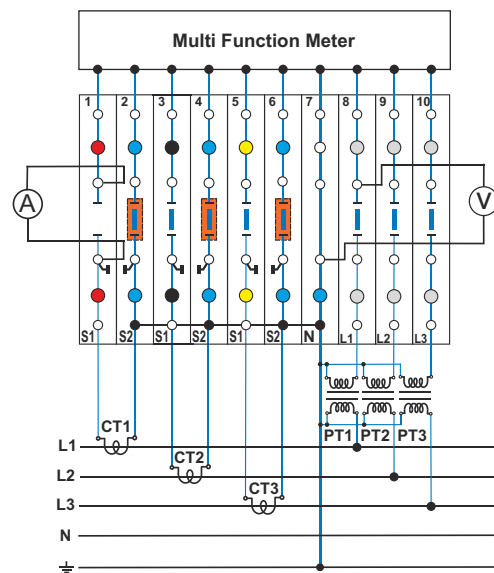
# Usage of STH4DT Test Disconnect Terminal Block for multi function meter for 4 wire system



No.	Cat. No.	Qty.
1	STH4DT	9
2	STH4DTFT	1
3	QJ11/2	3
4	CA514/14-4A	1
5	LCSTH4DT	3
6	EPSTH4DT	1
7	CA202	2
8	CA509/K10	20

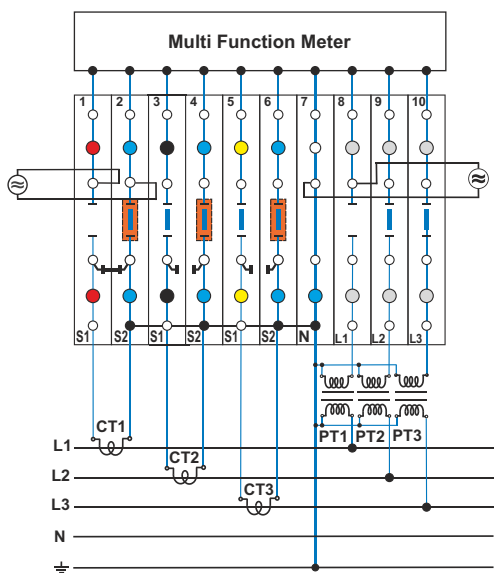


Normal Operation



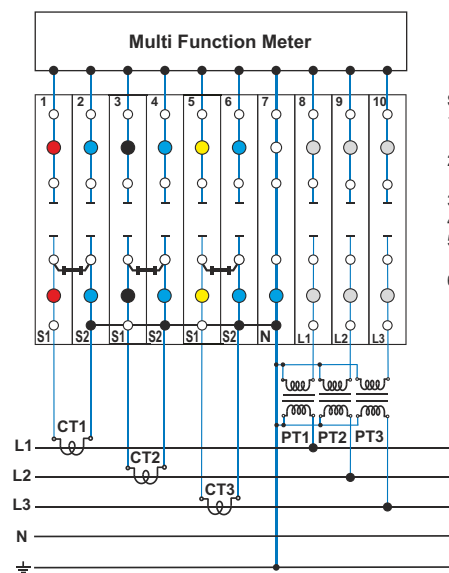
Measurement Standard for Phase L1

- Sequence for test :
- 1) Connect the ammeter to the test socket of terminal 1
  - 2) Open the disconnect slide link of terminal 1
  - 3) Take the measurement
  - 4) Connect voltmeter to terminal 7 & 8
  - 5) Take the measurement



Measurement with External Current & Voltage Source

- Sequence for test :
- 1) Close the terminals 1 and 2 with shorting plug QJ11/2
  - 2) Open the disconnect slide link of terminal 1
  - 3) Connect the external source in the test sockets of terminal 1 & 2
  - 4) Open the disconnect slide link of terminal 7
  - 5) Connect the external source between in the test socket of terminal 7 & common point (Ground)
  - 6) Take the reading
  - 7) Repeat the procedure from point 1 to 6 for L2 & L3 phase



Replacement of Meter

- Sequence for test :
- 1) Close the terminals 1 & 2, 3 & 4, 5 & 6 with shorting plug QJ11/2
  - 2) Open the disconnect slide link of terminal 1 to 9
  - 3) Disconnect the meter
  - 4) Replace the meter
  - 5) Close all the disconnect slide link of terminal 1 to 9.
  - 6) Remove the shorting plug QJ11/2 from 1 & 2, 3 & 4, 5 & 6.


# POWER TERMINAL BLOCKS

CBB series Terminal Blocks are preferred for application using wires of large cross section. The Wire is crimped to a ring / fork lug and is screwed on to the flat current bar of the Terminal Block. Specially designed Mounting Feet holds the Terminal Block rigidly on to the Mounting Rail.

Two Lugs of the rated cross section can be connected to the Terminal Block, without sacrificing the safety of the Terminal Block.


PPCBB series partition plates can be installed even after assembly of cables on the Terminal Blocks.




Terminals with suffix LS have a standard slotted bolt assembled in the threaded bus bar. This enables faster wiring without the need of two wrenches / spanners.

Width (Thickness) x Length		32 x 75 mm
Height with DIN 35 x 7.5 / 35 x 15 mm Rail		47.5 mm / 54.5 mm
Connection Possibility as per		
With 1 Conductor per clamp	Stranded / Flexible with Ferrule / Lug	
With 2 same size Conductors per clamp	Stranded / Flexible with Ferrule / Lug	
Ratings As Per		
Voltage		1000 V    600 V    600 V
Current		150 A    150 A    150 A
Torque		3.0 Nm    27 lb-in    27 lb-in
Approvals		
Insulation Material / Material Group		Polyamide 6,6 / 1
Rated Impulse Voltage / Pollution Degree		8 KV / 3

## CBB35/50 & CBB35/50LS



IEC		UL - CSA	
6 - 50.0 mm <sup>2</sup>		10 - 1/0 AWG	
6 - 50.0 mm <sup>2</sup>		10 - 1/0 AWG	
IEC60947-1	UL-1059	CSA22.2-158	
1000 V	600 V	600 V	
150 A	150 A	150 A	
3.0 Nm	27 lb-in	27 lb-in	
			
Polyamide 6,6 / 1			
8 KV / 3			

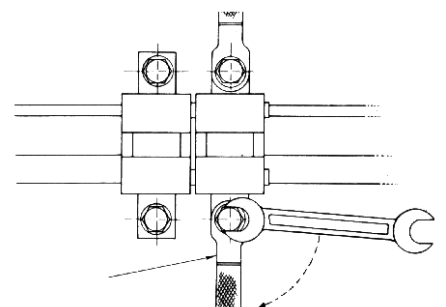
Terminal Block	With Nut & Bolt configuration With Threaded Current Bar	
Partition Plate		
Mounting Rail	(Refer Pg. 219 for details)	
End Clamp	(Refer Pg. 220 for details)	
Marking Tags	(Refer Pg. 224 for details)	
Screw / Bolt Size		

Type / Cat. No.	Standard Pack
CBB35/50	10
CBB35/50LS	10
PPCBB	10
CA701-1M / CA701-1M-S	50 m
CA701-15-1M / CA701-15-1M-S	25 m
CA702 / CA802 / CA202	50
CA509/K10WHT	100
M6	

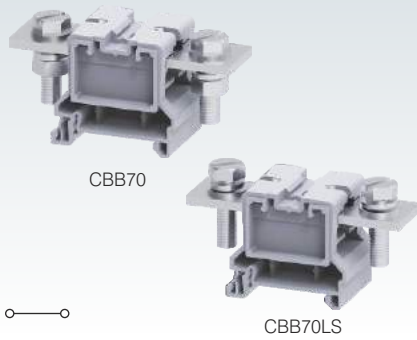
Shorting Links	Uninsulated	Imax	Standard Pack
70 mm	CBBPC1/70		10
80 mm	CBBPC1/80		10
100 mm	CTSPC2-1		10
130 mm	CBBPC1/130		10
160 mm	CBBPC1/160		10
200 mm	CBBPC1/200		10
250 mm	CBBPC1/250		10
Permanent Shorting Links	CA790/2	150 A	10
	CA790/3	150 A	10

### Installation instruction:

It is recommended to provide a back support to the wire while tightening the clamping bolt to avoid deformation of the mounting rail or to prevent damage of the Terminal Block by torsional force.



**CBB70 & CBB70LS**



38 x 92 mm  
47.3 mm / 54.5 mm

IEC	UL - CSA
6 - 70.0 mm <sup>2</sup>	8 - 2/0 AWG
6 - 70.0 mm <sup>2</sup>	8 - 2/0 AWG

IEC60947-7-1	UL-1059	CSA22.2-158
1000 V	600 V	600 V
192 A	175 A	175 A
6.0 Nm	54 lb-in	54 lb-in



Polyamide 6,6 / 1

8 KV / 3

Type / Cat. No.	Standard Pack
CBB70	10
CBB70LS	10
PPCBB	10
CA701-1M / CA701-1M-S	50 m
CA701-15-1M / CA701-15-1M-S	25 m
CA702 / CA802 / CA202	50
CA509/K16WHT	100
M8	

Uninsulated	Imax	Standard Pack
CBBPC1/70		10
CBBPC1/80		10
CTSPC2-1		10
CBBPC1/130		10
CBBPC1/160		10
CBBPC1/200		10
CBBPC1/250		10
CA791/2	192 A	10
CA791/3	192 A	10

**CBB95 & CBB95LS**



38 x 92 mm  
47.3 mm / 54.5 mm

IEC	UL - CSA
16 - 95.0 mm <sup>2</sup>	8 - 4/0 AWG
16 - 95.0 mm <sup>2</sup>	8 - 4/0 AWG

IEC60947-7-1	UL-1059	CSA22.2-158
1000 V	600 V	600 V
232 A	230 A	230 A
10.0 Nm	90 lb-in	90 lb-in



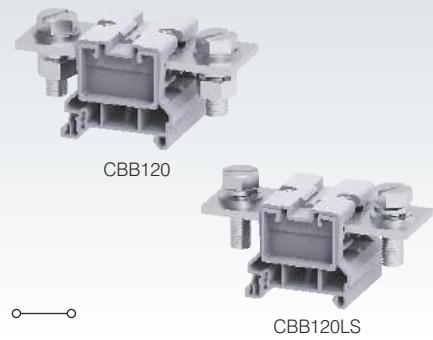
Polyamide 6,6 / 1

8 KV / 3

Type / Cat. No.	Standard Pack
CBB95	10
CBB95LS	10
PPCBB1	10
CA701-1M / CA701-1M-S	50 m
CA701-15-1M / CA701-15-1M-S	25 m
CA702 / CA802 / CA202	50
CA509/K16WHT	100
M8	

Uninsulated	Imax	Standard Pack
CBBPC2/100		10
CBBPC2/160		10
CBBPC2/200		10
CBBPC2/250		10
CA791/2	232 A	10
CA791/3	232 A	10

**CBB120 & CBB120LS**



48 x 100 mm  
47.3 mm / 54.5 mm

IEC	UL - CSA
16 - 120.0 mm <sup>2</sup>	8 - 250 KCMIL
16 - 120.0 mm <sup>2</sup>	8 - 250 KCMIL

IEC60947-7-1	UL-1059	CSA22.2-158
1000 V	600 V	600 V
269 A	255 A	255 A
10.0 Nm	90 lb-in	90 lb-in



Polyamide 6,6 / 1

8 KV / 3

Type / Cat. No.	Standard Pack
CBB120	10
CBB120LS	10
PPCBB1	10
CA701-1M / CA701-1M-S	50 m
CA701-15-1M / CA701-15-1M-S	25 m
CA702 / CA802 / CA202	50
CA509/K16WHT	100
M10	

Uninsulated	Imax	Standard Pack
CBBPC2/100		10
CBBPC2/160		10
CBBPC2/200		10
CBBPC2/250		10
CA793/2	269 A	10
CA793/3	269 A	10

# POWER TERMINAL BLOCKS

CBB series Terminal Blocks are preferred for application using wires of large cross section.

The Wire is crimped to a ring / fork lug and is screwed on to the flat current bar of the Terminal Block. Specially designed Mounting Feet holds the Terminal Block rigidly on to the Mounting Rail.

Two Lugs of the rated cross section can be connected to the Terminal Block, without sacrificing the safety of the Terminal Block.

PPCBB series partition plates can be installed even after assembly of cables on the Terminal Blocks.

Terminals with suffix LS have a standard slotted bolt assembled in the threaded bus bar. This enables faster wiring without the need of two wrenches / spanners. PTB series Terminal Blocks are preferred for application using wires of large cross section.

The Wire is crimped to a ring / fork lug and is screwed on to the flat current bar of the Terminal Block. Specially designed Mounting Feet holds the Terminal Block rigidly on to the Mounting Rail.

Two Lugs of the rated cross section can be connected to the Terminal Block, without sacrificing the safety of the Terminal Block.

In PTB35/50SH, PTB70/95SH Terminal Blocks a hinged protective cover makes the Terminal Block shock proof (finger safe) and has marker recess to accept marking tag.

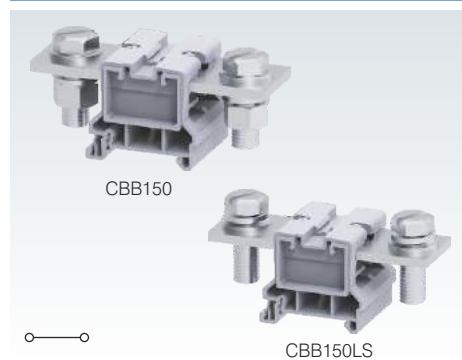
The Terminal Blocks can be stacked together by pressing the adjacent Terminal Blocks firmly\*.

Adjacent terminals can be shorted by removing a thin wall partition and using 2 & 3 pole shorting system.

Optional Marker Holder MHPTB35 can be used for installing marking tags on the Terminal Blocks without protective covers.

<b>Width (Thickness) x Length</b>		48 x 110 mm
<b>Height with DIN 35 x 7.5 / 35 x 15 mm Rail</b>		47.3 mm / 54.5 mm
<b>Connection Possibility as per</b>		
With 1 Conductor per clamp	Stranded / Flexible with Ferrule / Lug	
With 2 same size Conductors per clamp	Stranded / Flexible with Ferrule / Lug	
<b>Ratings As Per</b>		
<b>Voltage</b>	1000 V	600 V 600 V
<b>Current</b>	309 A	285 A 285 A
<b>Torque</b>	14.0 Nm	127 lb-in 127 lb-in
<b>Approvals</b>		
Insulation Material / Material Group		
Rated Impulse Voltage / Pollution Degree		

## CBB150 & CBB150LS



<b>IEC</b>	<b>UL - CSA</b>	
16 - 150.0 mm <sup>2</sup>	8 - 300 KCMIL	
16 - 150.0 mm <sup>2</sup>	8 - 300 KCMIL	
<b>IEC60947-1</b>	<b>UL-1059</b>	<b>CSA22.2-158</b>
1000 V	600 V	600 V
309 A	285 A	285 A
14.0 Nm	127 lb-in	127 lb-in
Insulation Material / Material Group		
Polyamide 6,6 / 1		
Rated Impulse Voltage / Pollution Degree		
8 KV / 3		

<b>Terminal Block</b>	With Nut & Bolt configuration With Threaded Current Bar
<b>Partition Plate / Protective Shroud</b>	PPCBB1
<b>Mounting Rail</b>	(Refer Pg. 219 for details)
<b>End Clamp</b>	(Refer Pg. 220 for details)
<b>Marking Tags</b>	(Refer Pg. 224 for details)
<b>Marker Holder</b>	
<b>Screw / Bolt Size</b>	M12

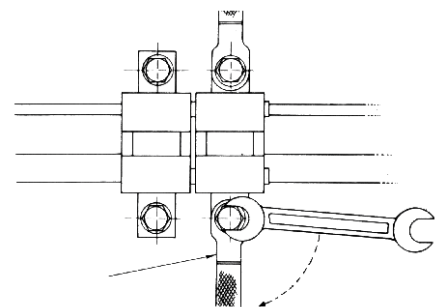
Type / Cat. No.	Standard Pack
CBB150	10
CBB150LS	10
PPCBB1	10
CA701-1M / CA701-1M-S	50 m
CA701-15-1M / CA701-15-1M-S	25 m
CA702 / CA802 / CA202	50
CA509/K16WHT	100
M12	

Shorting Links		100 mm	160 mm	200 mm	250 mm
Protective Cover for installing on PPCBB & PPCBB1					
Permanent Shorting Links		2 pole	3 pole		

Uninsulated	Imax	Standard Pack
CBBPC2/100		10
CBBPC2/160		10
CBBPC2/200		10
CBBPC2/250		10
CA794/2	309 A	10
CA794/3	309 A	10

### Installation instruction:

It is recommended to provide a back support to the wire while tightening the clamping bolt to avoid deformation of the mounting rail or to prevent damage of the Terminal Block by torsional force.



**CBB185 & CBB185LS**



48 x 110 mm  
47.3 mm / 54.5 mm

IEC	UL - CSA
16 - 185.0 mm <sup>2</sup>	8 - 350 KCMIL
16 - 185.0 mm <sup>2</sup>	8 - 350 KCMIL

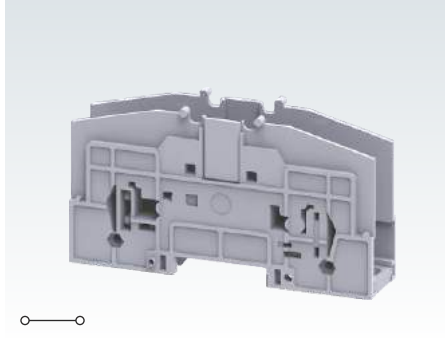
IEC60947-7-1	UL-1059	CSA22.2-158
1000 V	600 V	600 V
353 A	310 A	310 A
14.0 Nm	127 lb-in	127 lb-in



Polyamide 6,6 / 1

8 KV / 3

**PTB35/50**



25 x 113 mm  
61.0 mm / 68.3 mm

IEC	UL - CSA
1.5 - 50.0 mm <sup>2</sup>	8 - 2 AWG
1.5 - 50.0 mm <sup>2</sup>	8 - 2 AWG

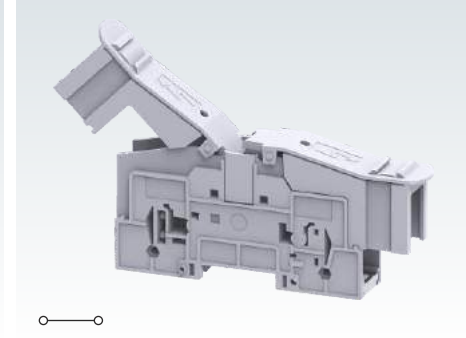
IEC60947-7-1	UL-1059	CSA22.2-158	IEC60079-7
1000 V	600 V	600 V	1100 V
150 A	115 A	115 A	126 A
3.0 Nm	27 lb-in	27 lb-in	3.0 Nm



Polyamide 6,6 / 1

8 KV / 3

**PTB35/50SH**



25 x 169 mm  
66.5 mm / 73.6 mm

IEC	UL - CSA
1.5 - 50.0 mm <sup>2</sup>	8 - 2 AWG
1.5 - 50.0 mm <sup>2</sup>	8 - 2 AWG

IEC60947-7-1	UL-1059	CSA22.2-158	IEC60079-7
1000 V	600 V	600 V	1100 V
150 A	115 A	115 A	126 A
3.0 Nm	27 lb-in	27 lb-in	3.0 Nm



Polyamide 6,6 / 1

8 KV / 3

Type / Cat. No.	Standard Pack
CBB185	10
CBB185LS	10
PPCBB1	10
CA701-1M / CA701-1M-S	50 m
CA701-15-1M / CA701-15-1M-S	25 m
CA702 / CA802 / CA202	50
CA509/K16WHT	100
M12	

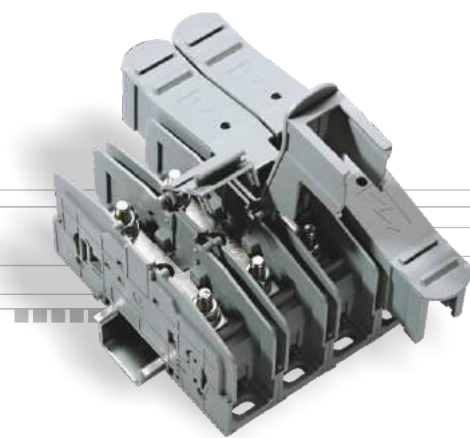
Uninsulated	Imax	Standard Pack
CBBPC2/100		10
CBBPC2/160		10
CBBPC2/200		10
CBBPC2/250		10
CA794/2	353 A	10
CA794/3	353 A	10

Type / Cat. No.	Standard Pack
PTB35/50	10
PSPTB35/50	20
CA701-1M / CA701-1M-S	50 m
CA701-15-1M / CA701-15-1M-S	25 m
CA202 / CA102	50
CA509/K9WHT	100
MHPTB35	10
M6	

Uninsulated	Imax	Standard Pack
CA703/9	150 A	10
CA704/9	150 A	10

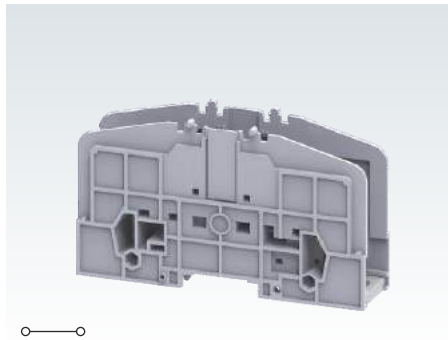
Type / Cat. No.	Standard Pack
PTB35/50SH	10
CA701-1M / CA701-1M-S	50 m
CA701-15-1M / CA701-15-1M-S	25 m
CA202 / CA102	50
CA509/K9WHT	100
MHPTB35	10
M6	

Uninsulated	Imax	Standard Pack
CA703/9	150 A	10
CA704/9	150 A	10

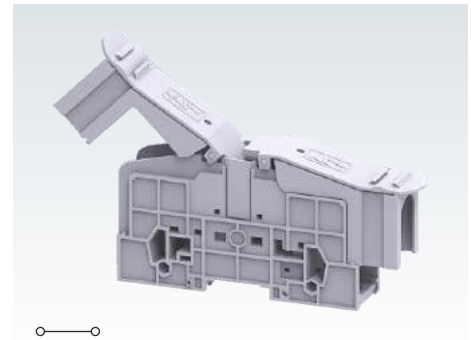


# POWER TERMINAL BLOCKS

## PTB70/95



## PTB70/95SH



Width (Thickness) x Length	32 x 130 mm
Height with DIN 35 x 7.5 / 35 x 15 mm Rail	76.6 mm / 84.5 mm
Connection Possibility as per	
With 1 Conductor per clamp	Stranded / Flexible with Ferrule / Lug
With 2 same size Conductors per clamp	Stranded / Flexible with Ferrule / Lug
Ratings As Per	
Voltage	1000 V
Current	232 A
Torque	10.0 Nm
Approvals	IECEE, CE, C, UL, US, S, Lloyds Register
Insulation Material / Material Group	Polyamide 6,6 / 1
Rated Impulse Voltage / Pollution Degree	8 KV / 3

IEC	UL - CSA					
1.5 - 95.0 mm <sup>2</sup>	8 - 4/0 AWG					
1.5 - 95.0 mm <sup>2</sup>	8 - 4/0 AWG					
IEC60947-7-1	UL-1059	CSA22.2-158				
1000 V	600 V	600 V				
232 A	230 A	230 A				
10.0 Nm	87 lb-in	87 lb-in				
IECEE	CE	C	UL	US	S	Lloyds Register
Polyamide 6,6 / 1						
8 KV / 3						

IEC	UL - CSA					
1.5 - 95.0 mm <sup>2</sup>	8 - 4/0 AWG					
1.5 - 95.0 mm <sup>2</sup>	8 - 4/0 AWG					
IEC60947-7-1	UL-1059	CSA22.2-158				
1000 V	600 V	600 V				
232 A	230 A	230 A				
10.0 Nm	87 lb-in	87 lb-in				
IECEE	CE	C	UL	US	S	Lloyds Register
Polyamide 6,6 / 1						
8 KV / 3						

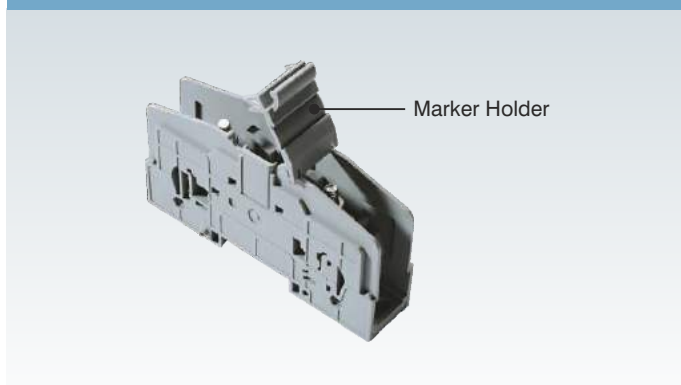
Terminal Block	Grey	PTB70/95	10	
Protective Cover		PSPTB70/95	20	
Mounting Rail (Refer Pg. 219 for details)		CA701-1M / CA701-1M-S CA701-15-1M / CA701-15-1M-S	50 m 25 m	
End Clamp (Refer Pg. 220 for details)		CA202 / CA102	50	
Marking Tags (Refer Pg. 224 for details)		CA509/K9WHT	100	
Marker Holder		MHPTB70	10	
Bolt Size		M8		
Shorting Links		Uninsulated	Imax	Standard Pack
Shorting System	2 pole 3 pole	CA703/11 CA704/11	220 A 220 A	10 10

Type / Cat. No.	Standard Pack	
PTB70/95	10	
PSPTB70/95	20	
CA701-1M / CA701-1M-S CA701-15-1M / CA701-15-1M-S	50 m 25 m	
CA202 / CA102	50	
CA509/K9WHT	100	
MHPTB70	10	
M8		
Uninsulated	Imax	Standard Pack
CA703/11 CA704/11	220 A 220 A	10 10

Type / Cat. No.	Standard Pack	
PTB70/95SH	10	
CA701-1M / CA701-1M-S CA701-15-1M / CA701-15-1M-S	50 m 25 m	
CA202 / CA102	50	
CA509/K9WHT	100	
MHPTB70	10	
M8		
Uninsulated	Imax	Standard Pack
CA703/11 CA704/11	220 A 220 A	10 10

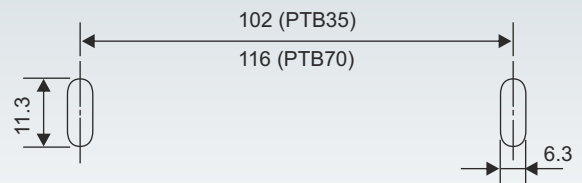
\* M3 Screw of desired length with nut can be used optionally to secure the stack.

## PTB35 with optional MHPTB35



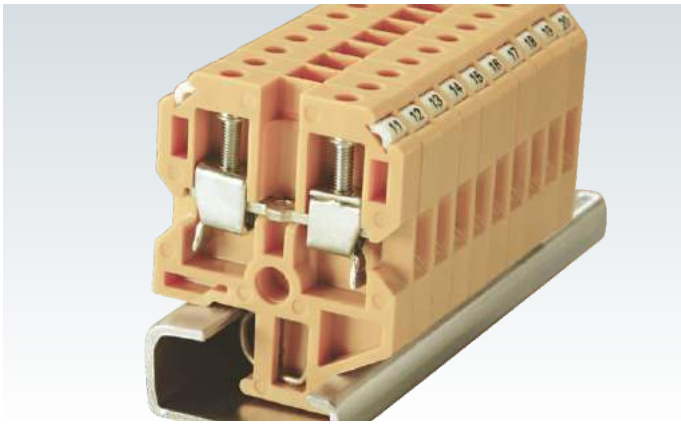
Marker Holder

## Panel Mounting Hole Details

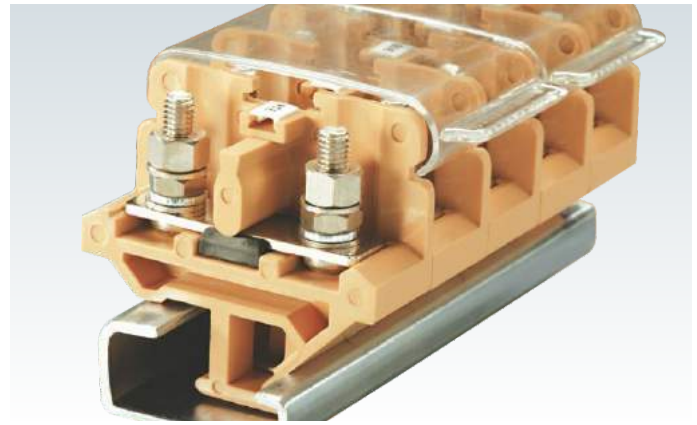


Dimension in mm

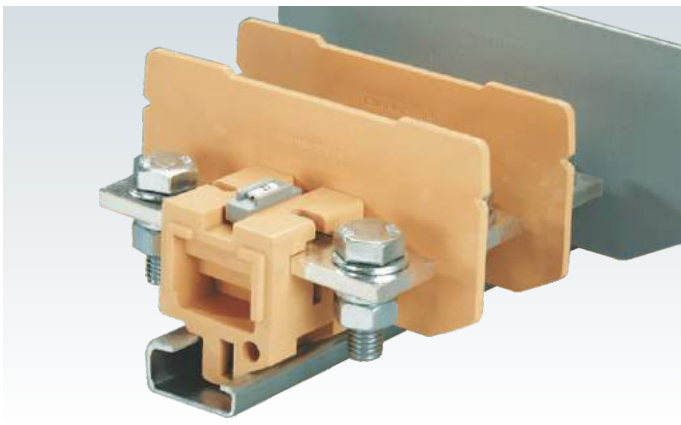




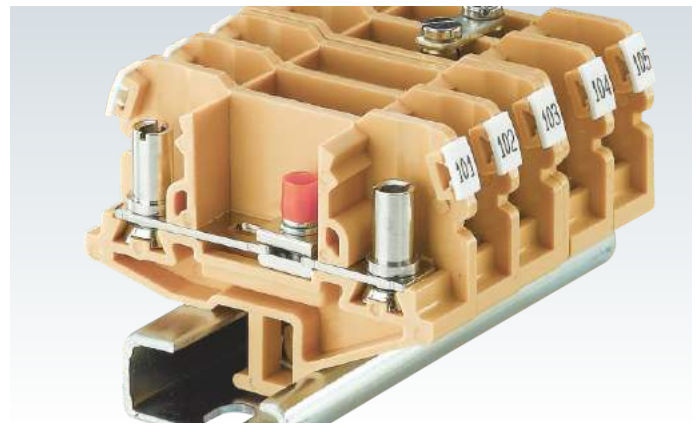
Screw Clamp Terminal Blocks with a high torque clamping system ensuring safe, gas tight connections. Cold forged, rolled threaded screws ensure highly reliable connections.



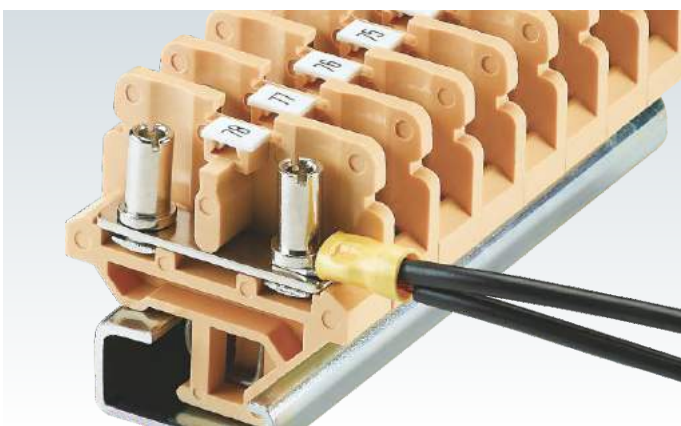
High Torque clamping system for ring & fork type lugs / ferrules. Extremely effective clamping system for areas prone to high vibrations.



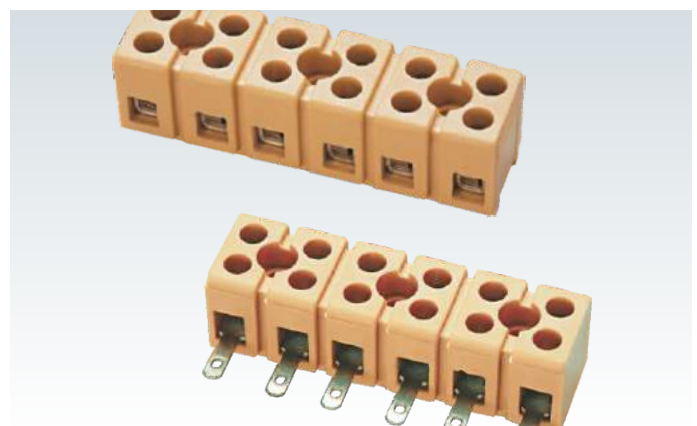
High current terminal blocks provide extremely reliable connection for higher size wires. Additional isolation plates are used to make these assemblies safe.



Disconnecting Terminal Block system is a versatile wire connection method for current transformer and power meters. A wide range of accessories eases the testing of these instruments.

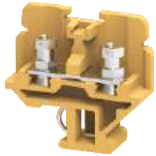


Commercially available ring or fork type lugs / ferrules can be used for terminating multiple wires. The bolt & nut system make these multi wire connections safe and secure.



Strip type terminals are used for electric and electronic equipments and smaller junction boxes. They can be cut to different pole configurations.

## MELAMINE TERMINAL BLOCKS

**Feed Through****199 - 201****Stud Type****202 - 206****Disconnect & Test****207 - 208****Bus Bar****209 - 210****Spring Loaded****211 - 212****Multipole Strip****213 - 214****Ceramic Terminal****215 - 216**

# STANDARD FEED THROUGH TERMINAL BLOCKS

These Terminal Blocks are ideal choice for use in High Temperature applications. These Terminal Blocks can be mounted on a standard 'G' rail and are available for wire sizes from 0.2 to 35 sq.mm

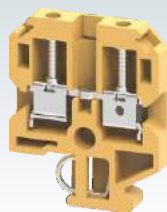
These Terminal Blocks have marker holding recesses to accept marking tags for circuit identification. Cross connection can be achieved with the aid of shorting links / sleeves & screws. The specially designed 'Knock Out' at the center must be removed to facilitate permanent shorting.

Width (Thickness) x Length		6 x 36.5 mm	
Height with DIN 32 x 15 mm Rail		46.5 mm	
Connection Possibility as per		<b>IEC</b>	<b>UL - CSA</b>
With 1 Conductor per clamp	Stranded / Flexible	0.2 - 2.5 mm <sup>2</sup>	22 - 12 AWG
	Solid	0.2 - 4.0 mm <sup>2</sup>	22 - 10 AWG
	with Ferrule / Lug	0.2 - 2.5 mm <sup>2</sup>	22 - 12 AWG
With 2 same size Conductors per clamp	Stranded / Flexible	0.2 - 1.5 mm <sup>2</sup>	22 - 14 AWG
	with TWIN Ferrule / Lug	0.2 - 1.5 mm <sup>2</sup>	22 - 16 AWG
Wire Stripping Length		9 mm	
Ratings As Per		IEC60947-7-1 CSA22.2-158	
Voltage		800 V	600 V
Current		24 A	25 A
Torque		0.4 Nm	7 lb-in
Approvals			
Insulation Material / Comparative Tracking Index		Melamine / 1	
Rated Impulse Voltage / Pollution Degree		8 KV / 3	
		<b>Type / Cat. No.</b>	<b>Standard Pack</b>
Terminal Block		CTS2.5M	200
	Blue	CTS2.5MBU	200
	Red	CTS2.5MR	200
	Yellow	CTS2.5MY	200
	Black	CTS2.5MBK	200
End Plate		CTSEP01	50
Partition Plate		CTSP01	50
Mounting Rail (Refer Pg. 219 for details)		CA501-1M / CA501-1M-S	25 m
End Clamp (Refer Pg. 220 for details)		CA502 / CA702	50
Marking Tags (Refer Pg. 224 for details)		CA509/K2WHT	100
Screw Driver		SCS0.5/3	Blade size: 0.5 x 3 mm 10



Shorting Links		Uninsulated	Insulated	I <sub>max</sub>	Standard Pack
Pre Assembled Shorting Links	2 pole	CA521/2	CA621/2	24 A	100
	3 pole	CA521/3	CA621/3	24 A	100
	4 pole	CA521/4	CA621/4	24 A	100
	10 pole	CA521/10	CA621/10	24 A	10
	Permanent Shorting Links	2 pole	CA503/01		24 A
	3 pole	CA504/01		24 A	100
	4 pole	CA505/01		24 A	100
	10 pole	CA510/10		24 A	100
Short Sleeve & Screw for Permanent Shorting Links		CA507/S/Q/01			50
Short Stud & Screw for permanent shorting		CA507/S/01			100
Switchable Shorting Links		CA506/01		24 A	100
Long Sleeve & Screw for Switchable Shorting Links		CA507/L/Q/01			100
Long Stud & Screw for temporary shorting		CA507/L/01			100
Test Socket		CA707/TS/04			100

### CTS2.5



6.7 x 40 mm

52 mm

IEC	UL - CSA
0.2 - 4.0 mm <sup>2</sup>	22 - 10 AWG
0.2 - 6.0 mm <sup>2</sup>	
0.2 - 4.0 mm <sup>2</sup>	22 - 10 AWG
0.2 - 2.5 mm <sup>2</sup>	22 - 12 AWG
0.2 - 2.5 mm <sup>2</sup>	22 - 12 AWG

12 mm

IEC60947-7-1 CSA22.2-158

800 V	600 V		
32 A	40 A*		
0.5 Nm	7 lb-in		

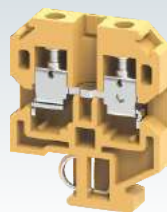


Melamine / 1

8 KV / 3

Type / Cat. No.	Standard Pack
CTS2.5	200
CTS2.5BU	200
CTS2.5R	200
CTS2.5Y	200
CTS2.5BK	200
CTSEP1	50
CTSP1L	50
CTSP1B	50
CA501-1M / CA501-1M-S	25 m
CA502 / CA702	50
CA509/K2WHT	100
SCS0.6/3.5 Blade size: 0.6 x 3.5 mm	10

### CTS6



8 x 40 mm

52 mm

IEC	UL - CSA
1.5 - 6.0 mm <sup>2</sup>	22 - 8 AWG
1.5 - 6.0 mm <sup>2</sup>	
1.5 - 6.0 mm <sup>2</sup>	22 - 8 AWG
1.5 - 4.0 mm <sup>2</sup>	22 - 10 AWG
1.5 - 4.0 mm <sup>2</sup>	22 - 10 AWG

10 mm

IEC60947-7-1 CSA22.2-158

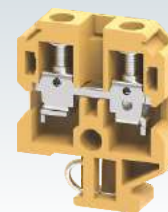
1000 V	600 V		
41 A	50 A		
0.8 Nm	14 lb-in		



Melamine / 1

Type / Cat. No.	Standard Pack
CTS6	200
CTS6BU	200
CTS6R	200
CTS6Y	200
CTS6BK	200
CTSEP1	50
CTSP1L	50
CTSP1B	50
CA501-1M / CA501-1M-S	25 m
CA502 / CA702	50
CA509/K2WHT	100
SCS0.8/4 Blade size: 0.8 x 4 mm	10

### CTS10



10 x 40 mm

52 mm

IEC	UL - CSA
1.5 - 10.0 mm <sup>2</sup>	22 - 6 AWG
1.5 - 10.0 mm <sup>2</sup>	
1.5 - 10.0 mm <sup>2</sup>	22 - 6 AWG
1.5 - 6.0 mm <sup>2</sup>	22 - 8 AWG
1.5 - 6.0 mm <sup>2</sup>	22 - 10 AWG

12 mm

IEC60947-7-1 CSA22.2-158

1000 V	600 V		
57 A	65 A		
1.2 Nm	14 lb-in		



Melamine / 1

8 KV / 3

Type / Cat. No.	Standard Pack
CTS10	200
CTS10BU	200
CTS10R	200
CTS10Y	200
CTS10BK	200
CTSEP1	50
CTSP1L	50
CTSP1B	50
CA501-1M / CA501-1M-S	25 m
CA502 / CA702	50
CA509/K2WHT	100
SCS0.8/4 Blade size: 0.8 x 4 mm	10

Uninsulated	Insulated	I <sub>max</sub>	Standard Pack
CA522/2	CA622/2	32 A	100
CA522/3	CA622/3	32 A	100
CA522/4	CA622/4	32 A	100
CA522/10	CA622/10	32 A	10
CA503/1		32 A	100
CA504/1		32 A	100
CA505/1		32 A	100
CA510/1		32 A	100
CA507/S/Q/01			50
CA507/S/01			100
CA506/01		24 A	100
CA507/L/Q/01			100
CA507/L/01			100
CA707/TS/04			100

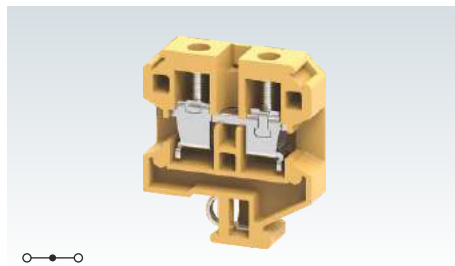
Uninsulated	Insulated	I <sub>max</sub>	Standard Pack
CA723/2	CA743/2	41 A	100
CA723/3	CA743/3	41 A	100
CA723/4	CA743/4	41 A	100
CA723/10	CA743/10	41 A	10
CA703/2		41 A	100
CA704/2		41 A	100
CA705/2		41 A	100
CA733/10		41 A	100
CA707/S/Q/1			100
CA507/S/1			100
CA706/2		41 A	100
CA707/L/Q/1			100
CA507/L/1			100
CA707/TS/05			100

Uninsulated	Insulated	I <sub>max</sub>	Standard Pack
CA724/2	CA744/2	57 A	100
CA724/3	CA744/3	57 A	100
CA724/4	CA744/4	57 A	100
CA724/10	CA744/10	57 A	10
CA703/3		57 A	100
CA704/3		57 A	100
CA705/3		57 A	100
CA734/10		57 A	100
CA707/S/Q/1			100
CA507/S/2			100
CA706/3		24 A	100
CA707/L/Q/1			100
CA507/L/2			100
CA707/TS/05			100

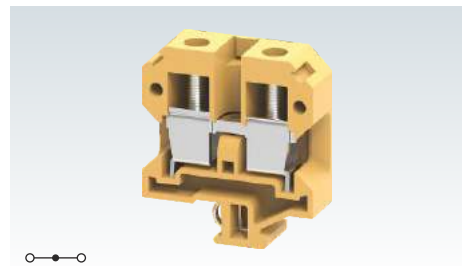
\* 40 Amp with two 12 AWG wires  
35 Amp with one 10 AWG wire

# STANDARD FEED THROUGH TERMINAL BLOCKS

## CTS16



## CTS35



Width (Thickness) x Length	12 x 50 mm				18 x 58 mm			
Height with DIN 32 x 15 mm Rail	57.5 mm				66.8 mm			
Connection Possibility as per	IEC	UL - CSA		IEC	UL - CSA			
		Stranded / Flexible	6.0 - 16.0 mm <sup>2</sup>		20 - 4 AWG	10.0 - 35.0 mm <sup>2</sup>		
With 1 Conductor per clamp		with Ferrule / Lug	6.0 - 16.0 mm <sup>2</sup>	20 - 4 AWG		10.0 - 35.0 mm <sup>2</sup>	8 - 2 AWG	
With 2 same size Conductors per clamp	IEC	UL - CSA		IEC	UL - CSA			
		Stranded / Flexible	6.0 - 10.0 mm <sup>2</sup>		20 - 8 AWG	10.0 - 16.0 mm <sup>2</sup>		
		with TWIN Ferrule / Lug	6.0 - 10.0 mm <sup>2</sup>	20 - 8 AWG		10.0 - 16.0 mm <sup>2</sup>	8 - 6 AWG	
Wire Stripping Length	14 mm				20 mm			
Ratings As Per	IEC60947-7-1 CSA22.2-158				IEC60947-7-1 CSA22.2-158			
Voltage	1000 V	600 V		1100 V	600 V			
	Current	76 A	85 A	125 A	145 A			
Torque	1.2 Nm	14 lb-in		2.5 Nm	25 lb-in			
	Approvals				Approvals			
Insulation Material / Comparative Tracking Index	Melamine / 1				Melamine / 1			
Rated Impulse Voltage / Pollution Degree	8 KV / 3				8 KV / 3			

	Type / Cat. No.	Standard Pack	Type / Cat. No.	Standard Pack
Terminal Block	CTS16	100	CTS35	50
	Blue CTS16BU	100	CTS35BU	50
	Red CTS16R	100	CTS35R	50
	Yellow CTS16Y	100	CTS35Y	50
	Black CTS16BK	100	CTS35BK	50
End Plate	CTSEP2	50	CTSEP3	25
Partition Plate	CTSP2	50	CTSP3	25
Mounting Rail (Refer Pg. 219 for details)	CA501-1M / CA501-1M-S	25 m	CA501-1M / CA501-1M-S	25 m
End Clamp (Refer Pg. 220 for details)	CA502 / CA702	50	CA502 / CA702	50
Marking Tags (Refer Pg. 224 for details)	CA509/K2WHT	100	CA509/K2WHT	100
Screw Driver	SCS0.8/4 Blade size: 0.8 x 4 mm	10	SCS1.0/5.5 Blade size: 1.0 x 5.5 mm	10

	Uninsulated	Insulated	I <sub>max</sub>	Standard Pack	Uninsulated	Insulated	I <sub>max</sub>	Standard Pack
Pre Assembled Shorting Links	2 pole	CA751/2	CA761/2	65 A	50			
	3 pole	CA751/3	CA761/3	65 A	50			
	4 pole	CA751/4	CA761/4	65 A	50			
	10 pole	CA751/10	CA761/10	65 A	10			
Permanent Shorting Links	2 pole	CA703/8		65 A	100	CA503/5	125 A	100
	3 pole	CA704/8		65 A	100	CA504/5	125 A	100
	4 pole	CA705/8		65 A	100	CA505/5	125 A	100
	10 pole	CA739/10		65 A	100	CA510/5	125 A	100
Short Sleeve & Screw for Permanent Shorting Links	CA507/S/Q1			100	CA508/S/Q			100
Short Stud & Screw for permanent shorting	CA507/S/2			100	CA508/S			100
Switchable Shorting Links	CA706/8		65 A	100	CA506/5	125 A	100	
Long Sleeve & Screw for Switchable Shorting Links	CA707/L/Q1			100	CA508/L/Q			100
Long Stud & Screw for temporary shorting	CA507/L/2			100	CA508/L			100
Test Socket	CA707/TS/05			100	CA707/TS/06			100

# STUD TYPE TERMINAL BLOCKS

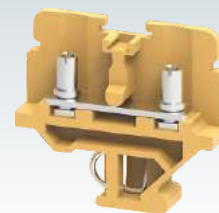
These Terminal Blocks are preferred for applications where the connections are subjected to severe vibrations.

The wire is crimped to a ring / fork type lug (ferrule) and is screwed on to the flat current bar on the Terminal Block. The range includes Terminal Blocks for wire sizes from 0.25 to 35 sq.mm.

Cross connection can be achieved with the aid of external shorting links.

It is recommended to use Protective Covers in transparent plastic to fully shroud these assemblies.

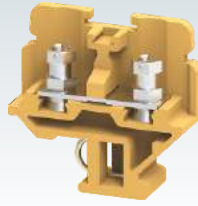
## CSTSB3



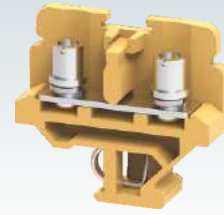
Width (Thickness) x Length	10 x 50 mm			
Height with DIN 32 x 15 mm Rail	47.5 mm			
Connection Possibility as per	IEC	UL - CSA		
With 1 Conductor per clamp	Stranded / Flexible with Ferrule / Lug	1.5 - 6.0 mm <sup>2</sup>	22 - 10 AWG	
	Solid with Ferrule / Lug	1.5 - 6.0 mm <sup>2</sup>		
With 2 same size Conductors per clamp	Stranded / Flexible with Ferrule / Lug	1.5 - 2.5 mm <sup>2</sup>	22 - 12 AWG	
Wire Stripping Length	9 mm			
Ratings As Per	IEC60947-7-1 CSA22.2-158			
Voltage	1100 V	600 V		
Current	41 A	35 A		
Torque	0.5 Nm	7 lb-in		
Approvals				
Insulation Material / Comparative Tracking Index	Melamine / 1			
Rated Impulse Voltage / Pollution Degree	8 KV / 3			
	<b>Type / Cat. No.</b>	<b>Standard Pack</b>		
Terminal Block	CSTSB3	100		
	CSTSB3BU	100		
	CSTSB3R	100		
	CSTSB3Y	100		
	CSTSB3BK	100		
End Plate	CSTSEP2	50		
Partition Plate	CSTSPPP	50		
Mounting Rail (Refer Pg. 219 for details)	CA501-1M / CA501-1M-S	25 m		
End Clamp (Refer Pg. 220 for details)	CA502 / CA702	50		
Marking Tags (Refer Pg. 224 for details)	CA509/K2B4WHT	100		
Screw Driver	SCS0.8/4	Blade size: 0.8 x 4 mm		
Stud Size				
	<b>Type / Cat. No.</b>	<b>I<sub>max</sub></b>	<b>Standard Pack</b>	
Fork Type Shorting Links	2 pole	CA512/5-2	32 A	100
	3 pole	CA512/5-3	32 A	50
	4 pole	CA512/5-4	32 A	50
Insulated Fork Type Shorting Links	2 pole	CA514/5-2	32 A	100
	3 pole	CA514/5-3	32 A	50
	4 pole	CA514/5-4	32 A	50
Ring Type Shorting Links	2 pole	CA512/6-2	32 A	100
	3 pole	CA512/6-3	32 A	50
	4 pole	CA512/6-4	32 A	50
Insulated Ring Type Shorting Links	2 pole	CA514/6-2	32 A	100
	3 pole	CA514/6-3	32 A	50
	4 pole	CA514/6-4	32 A	50
Protective Cover for covering	2 Terminal	CSTSPC3		100
	3 Terminal	CSTSPC3-1		100
Protective Cover in Length	100 mm	CSTSPC1-2		10
	200 mm	CSTSPC1-3		10
	300 mm	CSTSPC1-4		10

# STUD TYPE TERMINAL BLOCKS

## CSTSB4/N4



## CSTSB5

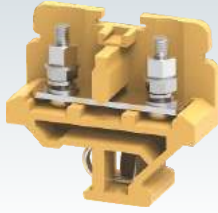


Width (Thickness) x Length	13 x 45.0 mm		13 x 50 mm	
Height with DIN 32 x 15 mm Rail	45.0 mm		47.5 mm	
Connection Possibility as per	IEC	UL - CSA	IEC	UL - CSA
With 1 Conductor per clamp	Stranded / Flexible with Ferrule / Lug	1.5 - 10.0 mm <sup>2</sup>	22 - 6 AWG	1.5 - 16.0 mm <sup>2</sup>
	Solid with Ferrule / Lug			22 - 4 AWG
With 2 same size Conductors per clamp	Stranded / Flexible with Ferrule / Lug	1.5 - 10.0 mm <sup>2</sup>	22 - 6 AWG	1.5 - 6.0 mm <sup>2</sup>
				22 - 8 AWG
Wire Stripping Length	12 mm		12 mm	
Ratings As Per	IEC60947-7-1		IEC60947-7-1 CSA22.2-158	
Voltage	1100 V		1000 V	600 V
Current	57 A		76 A	80 A
Torque	1.2 Nm		2.0 Nm	25 lb-in
Approvals	CE		IECEE CE C-SP US	
Insulation Material / Comparative Tracking Index	Melamine / 1		Melamine / 1	
Rated Impulse Voltage / Pollution Degree	8 KV / 3		8 KV / 3	

	Type / Cat. No.	Standard Pack	Type / Cat. No.	Standard Pack
Terminal Block	CSTSB4/N4	100	CSTSB5	100
	Blue CSTSB4/N4BU	100	CSTSB5BU	100
	Red CSTSB4/N4R	100	CSTSB5R	100
	Yellow CSTSB4/N4Y	100	CSTSB5Y	100
	Black CSTSB4/N4BK	100	CSTSB5BK	100
End Plate	EPCSTSB4/N4	50	CSTSEP2	50
Partition Plate			CSTSPPP	50
Mounting Rail (Refer Pg. 219 for details)	CA501-1M / CA501-1M-S	25 m	CA501-1M / CA501-1M-S	25 m
End Clamp (Refer Pg. 220 for details)	CA502 / CA702	50	CA502 / CA702	50
Marking Tags (Refer Pg. 224 for details)	CA509/K2B4WHT	100	CA509/K2B4WHT	100
Screw Driver	SCS1.0/5.5 Blade size: 1.0 x 5.5 mm	10	SCS1.0/5.5 Blade size: 1.0 x 5.5 mm	10
Stud Size	M4			

	Type / Cat. No.	I <sub>max</sub>	Standard Pack	Type / Cat. No.	I <sub>max</sub>	Standard Pack
Fork Type Shorting Links	2 pole	45 A	100	CA512/2-2	45 A	100
	3 pole	45 A	50	CA512/2-3	45 A	50
	4 pole	45 A	50	CA512/2-4	45 A	50
Insulated Fork Type Shorting Links	2 pole	45 A	100	CA514/2-2	45 A	100
	3 pole	45 A	50	CA514/2-3	45 A	50
	4 pole	45 A	50	CA514/2-4	45 A	50
Ring Type Shorting Links	2 pole	45 A	100	CA512/4-2	45 A	100
	3 pole	45 A	50	CA512/4-3	45 A	50
	4 pole	45 A	50	CA512/4-4	45 A	50
Insulated Ring Type Shorting Links	2 pole	45 A	100	CA514/4-2	45 A	100
	3 pole	45 A	50	CA514/4-3	45 A	50
	4 pole	45 A	50	CA514/4-4	45 A	50
Protective Cover for covering	2 Terminal			CSTSPC2		100
	3 Terminal			CSTSPC2-1		100
Protective Cover in Length	100 mm		10	CSTSPC1-2		10
	200 mm		10	CSTSPC1-3		10
	300 mm		10	CSTSPC1-4		10
	CSTSPC1-5					
	CSTSPC1-6					
	CSTSPC1-7					

**CSTSN4**



17 x 50 mm

47.5 mm

IEC	UL - CSA
1.5 - 10.0 mm <sup>2</sup>	22 - 6 AWG

1.5 - 6.0 mm <sup>2</sup>	22 - 8 AWG
---------------------------	------------

12 mm

IEC60947-7-1 CSA22.2-158

1100 V	600 V		
57 A	65 A		
1.2 Nm	14 lb-in		

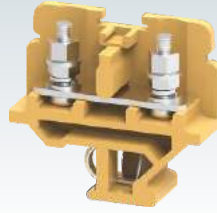


Melamine / 1

8 KV / 3

Type / Cat. No.	Standard Pack
CSTSN4	100
CSTSN4BU	100
CSTSN4R	100
CSTSN4Y	100
CSTSN4BK	100
CSTSEP2	50
CSTSP	50
CA501-1M / CA501-1M-S	25 m
CA502 / CA702	50
CA509/K2B4WHT	100

**CSTSN415**



15 x 50 mm

47.5 mm

IEC	UL - CSA
1.5 - 10.0 mm <sup>2</sup>	22 - 6 AWG

1.5 - 6.0 mm <sup>2</sup>	22 - 8 AWG
---------------------------	------------

12 mm

IEC60947-7-1 CSA22.2-158

1000 V	600 V		
57 A	65 A		
1.2 Nm	14 lb-in		



Melamine / 1

8 KV / 3

Type / Cat. No.	Standard Pack
CSTSN415	100
CSTSN415BU	100
CSTSN415R	100
CSTSN415Y	100
CSTSN415BK	100
CSTSEP2	50
CSTSP	50
CA501-1M / CA501-1M-S	25 m
CA502 / CA702	50
CA509/K2B4WHT	100

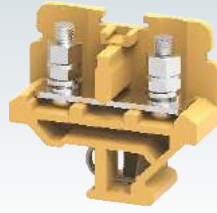
Type / Cat. No.	I <sub>max</sub>	Standard Pack
CA512/1-2	45 A	100
CA512/1-3	45 A	50
CA512/1-4	45 A	50
CA514/1-2	45 A	100
CA514/1-3	45 A	50
CA514/1-4	45 A	50
CA512/3-2	45 A	100
CA512/3-3	45 A	50
CA512/3-4	45 A	50
CA514/3-2	45 A	100
CA514/3-3	45 A	50
CA514/3-4	45 A	50
CSTSPC1		100
CSTSPC1-1		100
CSTSPC1-2		10
CSTSPC1-3		10
CSTSPC1-4		10

Type / Cat. No.	I <sub>max</sub>	Standard Pack
CA512/9-2	45 A	100
CA512/9-3	45 A	50
CA512/9-4	45 A	50
CA514/9-2	45 A	100
CA514/9-3	45 A	50
CA514/9-4	45 A	50
CA512/10-2	45 A	100
CA512/10-3	45 A	50
CA512/10-4	45 A	50
CA514/10-2	45 A	100
CA514/10-3	45 A	50
CA514/10-4	45 A	50
CSTSPC1		100
CSTSPC1-1		100
CSTSPC1-2		10
CSTSPC1-3		10
CSTSPC1-4		10

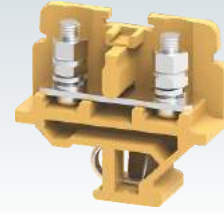


# STUD TYPE TERMINAL BLOCKS

## CSTSN5



## CSTSN515



Width (Thickness) x Length	17 x 50 mm		15 x 50 mm	
Height with DIN 32 x 15 mm Rail	47.5 mm		47.5 mm	
Connection Possibility as per	IEC	UL - CSA	IEC	UL - CSA
With 1 Conductor per clamp	Stranded / Flexible with Ferrule / Lug	1.5 - 16.0 mm <sup>2</sup>	22 - 4 AWG	1.5 - 16.0 mm <sup>2</sup>
With 2 same size Conductors per clamp	Solid with Ferrule / Lug	1.5 - 6.0 mm <sup>2</sup>	22 - 8 AWG	1.5 - 6.0 mm <sup>2</sup>
Wire Stripping Length	12 mm		12 mm	
Ratings As Per	IEC60947-7-1 CSA22.2-158		IEC60947-7-1 CSA22.2-158	
Voltage	1100 V	600 V	1000 V	600 V
Current	76 A	80 A	76 A	80 A
Torque	2.0 Nm	25 lb-in	2.0 Nm	25 lb-in
Approvals				
Insulation Material / Comparative Tracking Index	Melamine / 1		Melamine / 1	
Rated Impulse Voltage / Pollution Degree	8 KV / 3		8 KV / 3	

	Type / Cat. No.	Standard Pack	Type / Cat. No.	Standard Pack
Terminal Block	CSTSN5	100	CSTSN515	100
	Blue CSTSN5BU	100	CSTSN515BU	100
	Red CSTSN5R	100	CSTSN515R	100
	Yellow CSTSN5Y	100	CSTSN515Y	100
	Black CSTSN5BK	100	CSTSN515BK	100
End Plate	CSTSEP2	50	CSTSEP2	50
Partition Plate	CSTSP	50	CSTSP	50
Mounting Rail (Refer Pg. 219 for details)	CA501-1M / CA501-1M-S	25 m	CA501-1M / CA501-1M-S	25 m
End Clamp (Refer Pg. 220 for details)	CA502 / CA702	50	CA502 / CA702	50
Marking Tags (Refer Pg. 224 for details)	CA509/K2B4WHT	100	CA509/K2B4WHT	100
Stud Size	M5		M5	
Marker Mounting Carrier				

Shorting Links			Type / Cat. No.	I <sub>max</sub>	Standard Pack	Type / Cat. No.	I <sub>max</sub>	Standard Pack
Fork Type Shorting Links	2 pole	CA512/1-2	45 A	100	CA512/9-2	45 A	100	
	3 pole	CA512/1-3	45 A	50	CA512/9-3	45 A	50	
	4 pole	CA512/1-4	45 A	50	CA512/9-4	45 A	50	
Insulated Fork Type Shorting Links	2 pole	CA514/1-2	45 A	100	CA514/9-2	45 A	100	
	3 pole	CA514/1-3	45 A	50	CA514/9-3	45 A	50	
	4 pole	CA514/1-4	45 A	50	CA514/9-4	45 A	50	
Ring Type Shorting Links	2 pole	CA512/3-2	45 A	100	CA512/10-2	45 A	100	
	3 pole	CA512/3-3	45 A	50	CA512/10-3	45 A	50	
	4 pole	CA512/3-4	45 A	50	CA512/10-4	45 A	50	
Insulated Ring Type Shorting Links	2 pole	CA514/3-2	45 A	100	CA514/10-2	45 A	100	
	3 pole	CA514/3-3	45 A	50	CA514/10-3	45 A	50	
	4 pole	CA514/3-4	45 A	50	CA514/10-4	45 A	50	
Protective Cover for covering	2 Terminal	CSTSPC1		100	CSTSPC4		100	
	3 Terminal	CSTSPC1-1		100	CSTSPC4-1		100	
Protective Cover in Length	90 mm							
	100 mm	CSTSPC1-2		10	CSTSPC1-2		10	
	150 mm							
	200 mm	CSTSPC1-3		10	CSTSPC1-3		10	
Protective Cover Holder	200 mm	CSTSPC1-4		10	CSTSPC1-4		10	
	300 mm							
		CSP1		100	CSP1		100	



# DISCONNECT & TEST TERMINAL BLOCKS

These blocks are used for measuring, control, regulatory circuits and for current transformer connection application. They provide a clear functional advantage for devices having utility instruments and associated transformers.

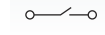
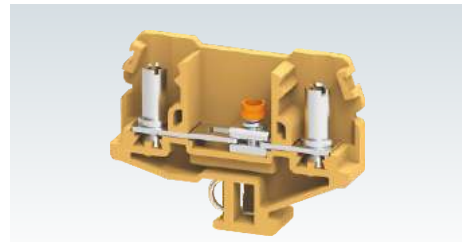
In CMDT4 terminal the disconnection of circuit is achieved by means of a central sliding link assembly with a clear orange indicator.

In the CMDT4S Terminal Block the orange indicator is replaced by a socket headed screw for achieving the circuit disconnection.

Cross connection is possible with the aid of external shorting links.

Barrel nuts provide test sockets for inserting test plugs and for carrying out current and voltage injection protocols.

## CMDT4

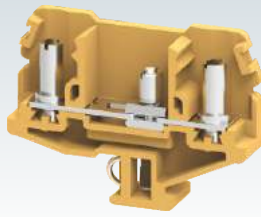


Width (Thickness) x Length	13 x 68 mm		
Height with DIN 32 x 15 mm Rail	51.7 mm		
Connection Possibility as per	IEC	UL - CSA	
With 1 Conductor per clamp	Stranded / Flexible with Ferrule / Lug	1.5 - 6.0 mm <sup>2</sup>	22 - 8 AWG
With 2 same size Conductors per clamp	Solid with Ferrule / Lug	1.5 - 6.0 mm <sup>2</sup>	22 - 8 AWG
Wire Stripping Length	12 mm		
Ratings As Per	IEC60947-7-1		
Voltage	1100 V		
Current	41 A		
Torque	1.2 Nm		
Approvals			
Insulation Material / Comparative Tracking Index	Melamine / 1		
Rated Impulse Voltage / Pollution Degree	8 KV / 3		

	Type / Cat. No.	Standard Pack
Terminal Block	CMDT4	50
	CMDT4BU	50
	CMDT4R	50
	CMDT4Y	50
	CMDT4BK	50
	EPCMDT4	50
End Plate	EPCMDT4	50
Mounting Rail (Refer Pg. 219 for details)	CA501-1M / CA501-1M-S	25 m
End Clamp (Refer Pg. 220 for details)	CA502 / CA702	50
Marking Tags (Refer Pg. 224 for details)	CA509/K2B4WHT	100
Screw Driver	SCS1.0/5.5 Blade size: 1.0 x 5.5 mm	10

Shorting Links			Type / Cat. No.	I <sub>max</sub>	Standard Pack
Fork Type Shorting Links	2 pole	CA512/2-2	41 A	100	
	3 pole	CA512/2-3	41 A	50	
	4 pole	CA512/2-4	41 A	50	
Insulated Fork Type Shorting Links	2 pole	CA514/2-2	41 A	100	
	3 pole	CA514/2-3	41 A	50	
	4 pole	CA514/2-4	41 A	50	
Ring Type Shorting Links	2 pole	CA512/4-2	41 A	100	
	3 pole	CA512/4-3	41 A	50	
	4 pole	CA512/4-4	41 A	50	
Insulated Ring Type Shorting Links	2 pole	CA514/4-2	41 A	100	
	3 pole	CA514/4-3	41 A	50	
	4 pole	CA514/4-4	41 A	50	
Protective Cover for covering	2 Terminal	CDTPC1		100	
	3 Terminal	CDTPC2		100	
Protective Cover in Length	100 mm	CDTPC3		10	
	200 mm	CDTPC4		10	
	300 mm	CDTPC5		10	

### CMDT4S



13 x 68 mm

51.7 mm

IEC	UL - CSA
1.5 - 6.0 mm <sup>2</sup>	22 - 8 AWG

1.5 - 6.0 mm<sup>2</sup>      22 - 8 AWG

12 mm

IEC60947-7-1

1100 V

41 A

1.2 Nm



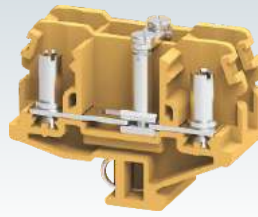
Melamine / 1

8 KV / 3

Type / Cat. No.	Standard Pack
CMDT4S	50
EPCMDT4	50
CA501-1M / CA501-1M-S	25 m
CA502 / CA702	50
CA509/K2B4WHT	100
SCS1.0/5.5 Blade size: 1.0 x 5.5 mm	10

Type / Cat. No.	I <sub>max</sub>	Standard Pack
CA512/2-2	41 A	100
CA512/2-3	41 A	50
CA512/2-4	41 A	50
CA514/2-2	41 A	100
CA514/2-3	41 A	50
CA514/2-4	41 A	50
CA512/4-2	41 A	100
CA512/4-3	41 A	50
CA512/4-4	41 A	50
CA514/4-2	41 A	100
CA514/4-3	41 A	50
CA514/4-4	41 A	50
CDTPC1		100
CDTPC2		100
CDTPC3		10
CDTPC4		10
CDTPC5		10

### CMDT4SH



26 x 68 mm

51.7 mm

IEC	UL - CSA
1.5 - 6.0 mm <sup>2</sup>	22 - 8 AWG

1.5 - 6.0 mm<sup>2</sup>      22 - 8 AWG

12 mm

IEC60947-7-1

500 V

32 A

1.2 Nm

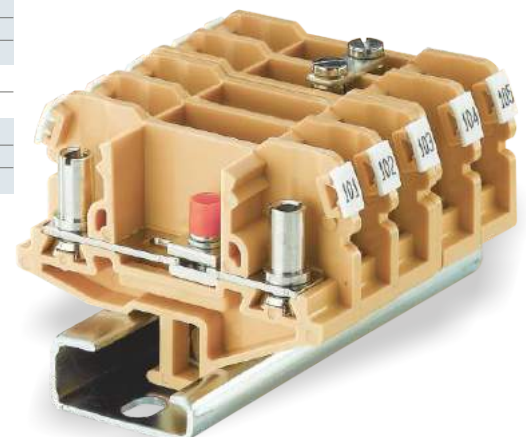


Melamine / 1

8 KV / 3

Type / Cat. No.	Standard Pack
CMDT4SH	25
CMDT4SHBU	25
CMDT4SHR	25
CMDT4SHY	25
CMDT4SHBK	25
EPCMDT4	50
CA501-1M / CA501-1M-S	25 m
CA502 / CA702	50
CA509/K2B4WHT	100
SCS1.0/5.5 Blade size: 1.0 x 5.5 mm	10

Type / Cat. No.	I <sub>max</sub>	Standard Pack
CA512/2-2	32 A	100
CA512/2-3	32 A	50
CA512/2-4	32 A	50
CA514/2-2	32 A	100
CA514/2-3	32 A	50
CA514/2-4	32 A	50
CA512/4-2	32 A	100
CA512/4-3	32 A	50
CA512/4-4	32 A	50
CA514/4-2	32 A	100
CA514/4-3	32 A	50
CA514/4-4	32 A	50



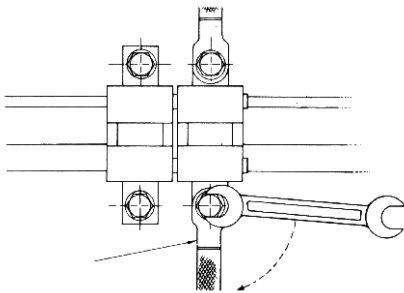
# BUS BAR TYPE TERMINAL BLOCKS

These Terminal Blocks are preferred for applications using wires of a large cross section. The wire is crimped to a ring / fork type lug (ferrule) and is screwed on to the flat current bar on the Terminal Block. The range includes Terminal Blocks for wire sizes from 16 sq.mm to 120 sq.mm. CTS35LS Terminal Blocks have a threading in the current bar, eliminating the need of locking nuts.

Partition / Isolation Plate must be used with every Terminal Block. The Protective Cover is designed to be mounted on a specially designed slot in the Partition Plate.

### Installation instruction:

It is recommended to provide a back support to the wire while tightening the clamping bolt to avoid deformation of the mounting rail or to prevent damage of the Terminal Block by torsional force.



Width (Thickness) x Length		28 x 75 mm	
Height with DIN 32 x 15 mm Rail		55.2 mm	
Connection Possibility as per		IEC	UL - CSA
With 1 Conductor per clamp	Stranded / Flexible with Ferrule / Lug	16.0 - 50.0 mm <sup>2</sup>	8 - 2 AWG
With 2 same size Conductors per clamp	Stranded / Flexible with Ferrule / Lug	16.0 - 50.0 mm <sup>2</sup>	8 - 2 AWG
Wire Stripping Length		12 mm	
Ratings As Per		IEC60947-7-1 CSA22.2-158	
Voltage		1000 V	600 V
Current		150 A	145 A
Torque		3.0 Nm	27 lb-in
Approvals			
Insulation Material / Comparative Tracking Index		Melamine / 1	
Rated Impulse Voltage / Pollution Degree		8 KV / 3	
		<b>Type / Cat. No.</b>	<b>Standard Pack</b>
Terminal Block	With Nut & Bolt configuration With Threaded Current Bar	CTS35L CTS35LS	10 10
Partition / Isolation Plate (Polyamide 66)		EP4P	10
Partition / Isolation Plate (Melamine)		CTSEP4	10
Locating Support for Partition / Isolation Plate		CTSEP4LO	10
Mounting Rail (Refer Pg. 219 for details)		CA501-1M / CA501-1M-S	25 m
End Clamp (Refer Pg. 220 for details)		CA502 / CA702 / CA102	50
Marking Tags (Refer Pg. 224 for details)		CA509/K2B4WHT	100
Bolt Size		M6	
<b>Shorting Links</b>		<b>Type / Cat. No.</b>	<b>I<sub>max</sub></b>
Shorting Links		CA796/2 CA796/3	125 A 125 A
Protective Cover in Length		<b>Mounted on</b>	
		CTSPC3-2	EP4P
		CTSPC2-1	CTSEP4
		CTSPC2-2	CTSEP4

## CTS35L / CTS35LS



Width (Thickness) x Length		28 x 75 mm	
Height with DIN 32 x 15 mm Rail		55.2 mm	
Connection Possibility as per		IEC	UL - CSA
With 1 Conductor per clamp	Stranded / Flexible with Ferrule / Lug	16.0 - 50.0 mm <sup>2</sup>	8 - 2 AWG
With 2 same size Conductors per clamp	Stranded / Flexible with Ferrule / Lug	16.0 - 50.0 mm <sup>2</sup>	8 - 2 AWG
Wire Stripping Length		12 mm	
Ratings As Per		IEC60947-7-1 CSA22.2-158	
Voltage		1000 V	600 V
Current		150 A	145 A
Torque		3.0 Nm	27 lb-in
Approvals			
Insulation Material / Comparative Tracking Index		Melamine / 1	
Rated Impulse Voltage / Pollution Degree		8 KV / 3	
		<b>Type / Cat. No.</b>	<b>Standard Pack</b>
Terminal Block	With Nut & Bolt configuration With Threaded Current Bar	CTS35L CTS35LS	10 10
Partition / Isolation Plate (Polyamide 66)		EP4P	10
Partition / Isolation Plate (Melamine)		CTSEP4	10
Locating Support for Partition / Isolation Plate		CTSEP4LO	10
Mounting Rail (Refer Pg. 219 for details)		CA501-1M / CA501-1M-S	25 m
End Clamp (Refer Pg. 220 for details)		CA502 / CA702 / CA102	50
Marking Tags (Refer Pg. 224 for details)		CA509/K2B4WHT	100
Bolt Size		M6	
<b>Shorting Links</b>		<b>Type / Cat. No.</b>	<b>I<sub>max</sub></b>
Shorting Links		CA796/2 CA796/3	125 A 125 A
Protective Cover in Length		<b>Mounted on</b>	
		CTSPC3-2	EP4P
		CTSPC2-1	CTSEP4
		CTSPC2-2	CTSEP4

**CTS70L / CTS70LS**



CTS70L

CTS70LS



40 x 92 mm

55.2 mm

IEC	UL - CSA
-----	----------

35.0 - 70.0 mm<sup>2</sup>      8 - 2/0 AWG

35.0 - 70.0 mm<sup>2</sup>      8 - 2/0 AWG

18 mm

IEC60947-7-1 CSA22.2-158

1000 V	600 V		
--------	-------	--	--

192 A	250 A		
-------	-------	--	--

10.0 Nm	87 lb-in		
---------	----------	--	--



Melamine / 1

8 KV / 3

Type / Cat. No.	Standard Pack
CTS70L	10
CTS70LS	10
EP4P	10
CTSEP4	10
CTSEP4LO	10
CA501-1M / CA501-1M-S	25 m
CA502 / CA702 / CA102	50
CA509/K2B4WHT	100
M8	

Type / Cat. No.	I <sub>max</sub>	Standard Pack
CA797/2	185 A	10
CA797/3	185 A	10
<b>Mounted on</b>		
CTSPC3-2	EP4P	10
CTSPC2-1	CTSEP4	10
CTSPC2-2	CTSEP4	10

**CTS95L / CTS95LS**



CTS95L

CTS95LS



40 x 92 mm

55.2 mm

IEC	UL - CSA
-----	----------

35.0 - 95.0 mm<sup>2</sup>      8 - 4/0 AWG

35.0 - 95.0 mm<sup>2</sup>      8 - 4/0 AWG

20 mm

IEC60947-7-1 CSA22.2-158

1000 V	600 V		
--------	-------	--	--

232 A	300 A		
-------	-------	--	--

10.0 Nm	87 lb-in		
---------	----------	--	--

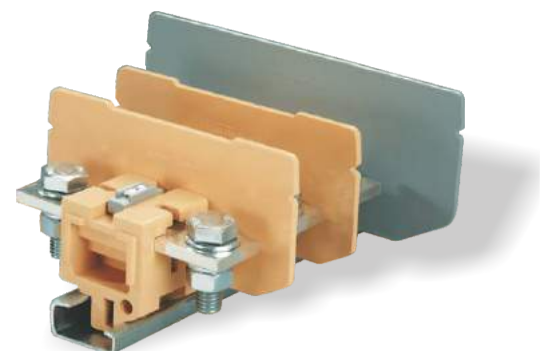


Melamine / 1

8 KV / 3

Type / Cat. No.	Standard Pack
CTS95L	10
CTS95LS	10
EP4P	10
CA501-1M / CA501-1M-S	25 m
CA502 / CA702 / CA102	50
CA509/K2B4WHT	100
M10	

Type / Cat. No.	I <sub>max</sub>	Standard Pack
CA798/2	220 A	10
CA798/3	220 A	10
<b>Mounted on</b>		
CTSPC3-1	EP4P	10
CTSPC2-3	CTSEP4	10



# SPRING LOADED TERMINAL BLOCKS

These modified version of feed through Terminal Blocks come with safety springs. These Terminal Blocks are preferred for connections that involve safety requirements of the Electric Supply Industry (ESI) standards, British CEBG regulations and NTPC applications. In addition to the high torque screws, these blocks have a built-in spring loading feature. It is recommended to use hook type lugs for terminating wires in such connections. These Terminal Blocks have a specially designed current bar for the right location/ placement of wires with hook type lugs, thus preventing loosening of the wires even when the screw clamps are not tightened.

The housing of these Terminal Blocks is made of High Grade Melamine which has insulation properties in accordance with the CEBG regulations.

Width (Thickness) x Length	6.7 x 40 mm		
Height with DIN 32 x 15 mm Rail	52.0 mm		
Connection Possibility as per	IEC	UL - CSA	
With 1 Conductor per clamp	Stranded / Flexible	0.2 - 4.0 mm <sup>2</sup>	22 - 10 AWG
	Solid with Ferrule / Lug	0.2 - 6.0 mm <sup>2</sup>	22 - 10 AWG
With 2 same size Conductors per clamp	Stranded / Flexible	0.2 - 4.0 mm <sup>2</sup>	22 - 10 AWG
	with TWIN Ferrule / Lug	0.2 - 2.5 mm <sup>2</sup>	22 - 12 AWG
Wire Stripping Length	12 mm		
Ratings As Per	IEC60947-7-1 CSA22.2-158		
Voltage	600 V	300 V	
Current	32 A	35 A	
Torque	0.5 Nm	7 lb-in	
Approvals			
Insulation Material / Comparative Tracking Index	Melamine / 1		
Rated Impulse Voltage / Pollution Degree	8 KV / 3		



	Type / Cat. No.	Standard Pack
Terminal Block	CTS4SC	200
End Plate	CTSEP1	50
Partition Plate	CTSPP1L CTSPP1B	50 50
Mounting Rail (Refer Pg. 219 for details)	CA501-1M / CA501-1M-S	25 m
End Clamp (Refer Pg. 220 for details)	CA502 / CA702	50
Marking Tags (Refer Pg. 224 for details)	CA509/K2WHT	100
Screw Driver	SCS0.6/3.5 Blade size: 0.6 x 3.5 mm	10

	Type / Cat. No.	I <sub>max</sub>	Standard Pack
Hook Type Lugs	1.5 sq.mm	CA604/1	100
	2.5 sq.mm	CA604/2	100
	6 sq.mm		
Pre Assembled Shorting Links	2 pole	CA522/2	32 A 100
	3 pole	CA522/3	32 A 100
	4 pole	CA522/4	32 A 100
	10 pole	CA522/10	32 A 10
Insulated Pre Assembled Shorting Link	2 pole	CA622/2	32 A 100
	3 pole	CA622/3	32 A 100
	4 pole	CA622/4	32 A 100
	10 pole	CA622/10	32 A 10
Permanent Shorting Links	2 pole	CA503/1	32 A 100
	3 pole	CA504/1	32 A 100
	4 pole	CA505/1	32 A 100
	10 pole	CA510/1	32 A 100
Short Sleeve & Screw for Permanent Shorting Links	CA507/S/Q/1		100
Switchable Shorting Links	CA506/1	32 A	100
Long Sleeve & Screw for Switchable Shorting Links	CA707/L/Q/1		100

### CTS6SC



8 x 40 mm

52.0 mm

IEC	UL - CSA
1.5 - 6.0 mm <sup>2</sup>	22 - 8 AWG
1.5 - 6.0 mm <sup>2</sup>	22 - 8 AWG
1.5 - 4.0 mm <sup>2</sup>	22 - 10 AWG
1.5 - 4.0 mm <sup>2</sup>	22 - 10 AWG

12 mm

IEC60947-7-1 CSA22.2-158

600 V	300 V		
41 A	50 A		
0.8 Nm	14 lb-in		



Melamine / 1

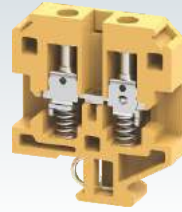
8 KV / 3

Type / Cat. No.	Standard Pack
CTS6SC	200
CTSEP1	50
CTSP1L	50
CTSP1B	50
CA501-1M / CA501-1M-S	25 m
CA502 / CA702	50
CA509/K2WHT	100
SCS0.8/4 Blade size: 0.8 x 4 mm	10

Type / Cat. No.	Imax	Standard Pack
CA604/1		100
CA604/2		100
CA604/3		100
CA723/2	41 A	100
CA723/3	41 A	50
CA723/4	41 A	50
CA723/10	41 A	10
CA743/2	41 A	100
CA743/3	41 A	50
CA743/4	41 A	50
CA743/10	41 A	10
CA703/2	41 A	100
CA704/2	41 A	100
CA705/2	41 A	100
CA733/10	41 A	100

CA707/S/Q/1		100
CA706/2	41 A	100
CA707/L/Q/1		100

### CTS10SC



11 x 50 mm

59.5 mm

IEC	UL - CSA
1.5 - 10.0 mm <sup>2</sup>	22 - 8 AWG
1.5 - 10.0 mm <sup>2</sup>	22 - 8 AWG
1.5 - 6.0 mm <sup>2</sup>	22 - 8 AWG
1.5 - 6.0 mm <sup>2</sup>	22 - 10 AWG

12 mm

IEC60947-7-1 CSA22.2-158

800 V	300 V		
57 A	50 A		
1.2 Nm	14 lb-in		



Melamine / 1

8 KV / 3

Type / Cat. No.	Standard Pack
CTS10SC	100
CTSEP1SC	50
CTSP1SC	50
CA501-1M / CA501-1M-S	25 m
CA502 / CA702	50
CA509/K2WHT	100
SCS0.8/4 Blade size: 0.8 x 4 mm	10

Type / Cat. No.	Imax	Standard Pack
CA604/1		100
CA604/2		100
CA604/3		100
CA604/4		100
CA526/2	57 A	100
CA526/3	57 A	50
CA526/4	57 A	50
CA526/10	57 A	10
CA626/2	57 A	100
CA626/3	57 A	50
CA626/4	57 A	50
CA626/10	57 A	10
CA503/6	57 A	100
CA504/6	57 A	100
CA505/6	57 A	100
CA510/6	57 A	100

CA707/S/Q/3		100
CA506/6	57 A	100
CA707/L/Q/3		100



# MULTIPOLE STRIP TERMINAL BLOCKS

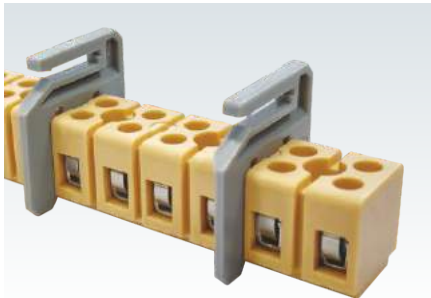
The CMST series Terminal Blocks can be directly mounted on panel surfaces with the help of fixing screws. They are available from a 2 upto 12 pole configuration.

CMST2 series Terminal Blocks are an ideal choice for transformers. It has a special current bar design, enabling direct soldering of transformer wires.

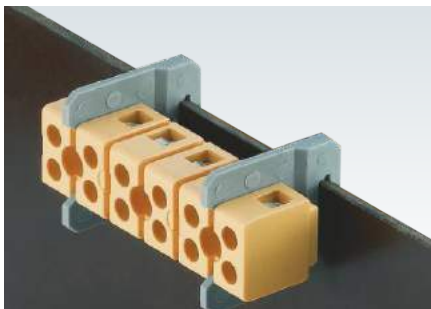
The CMST terminal strip can also be fixed on the edge of transformer plates / panels with the help of FPCMST fixing plates.

Cross connection can be achieved with the aid of insulated side shorting links.

FPCMST Partition plate for terminal strip

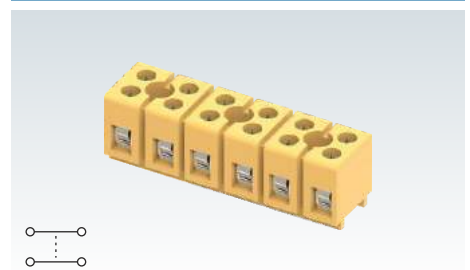


Mounting of terminal strip with panel fixing plate FPCMST

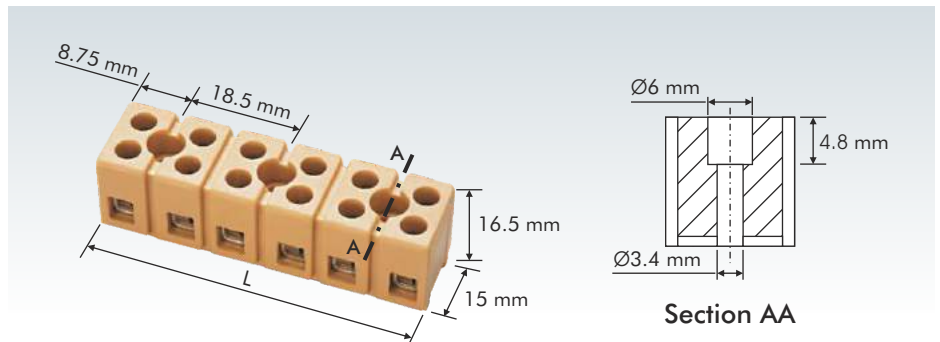


Connection Possibility as per		IEC	UL - CSA	
With 1 Conductor per clamp	Stranded / Flexible	0.2 - 2.5 mm <sup>2</sup>	22 - 14 AWG	
	Solid with Ferrule / Lug	0.2 - 4.0 mm <sup>2</sup>	22 - 10 AWG	
With 2 same size Conductors per clamp	Stranded / Flexible	0.2 - 2.5 mm <sup>2</sup>	22 - 14 AWG	
	with TWIN Ferrule / Lug	0.2 - 1.5 mm <sup>2</sup>	22 - 18 AWG	
Wire Stripping Length		9 mm		
Ratings As Per		IEC60947-7-1 CSA22.2-158		
Voltage		400 V	300 V	
Current		24 A	20 A	
Torque		0.4 Nm	4.5 lb-in	
Approvals				
Insulation Material / Comparative Tracking Index		Melamine / 1		
Rated Impulse Voltage / Pollution Degree		6 KV / 3		
		Type / Cat. No.	Length (L) mm	Standard Pack
Terminal Block	12 pole	CMST1	110	20
	2 pole	CMST12W	20	120
	3 pole	CMST13W	29	80
	4 pole	CMST14W	38	60
	5 pole	CMST15W	47	45
	6 pole	CMST16W	56	40
	7 pole	CMST17W	65	30
	8 pole	CMST18W	74	30
	9 pole	CMST19W	83	25
	10 pole	CMST110W	92	20
Panel Fixing / Partition Plate		FPCMST		50
Two pole Insulated Shorting Link		CA513	Imax.: 24 A	50
Marking Strip		CA509/7		10
Markers Fixing Screw with fibre washer size M3 x 18		CA502/F		20

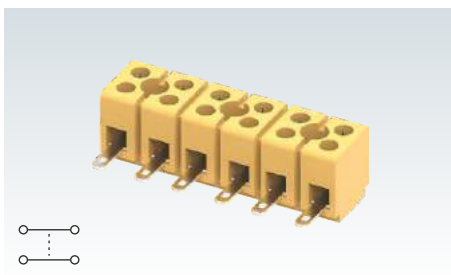
## CMST1



IEC	UL - CSA	
0.2 - 2.5 mm <sup>2</sup>	22 - 14 AWG	
0.2 - 4.0 mm <sup>2</sup>	22 - 10 AWG	
0.2 - 2.5 mm <sup>2</sup>	22 - 14 AWG	
0.2 - 1.5 mm <sup>2</sup>	22 - 18 AWG	
0.2 - 1.5 mm <sup>2</sup>	22 - 18 AWG	
9 mm		
IEC60947-7-1 CSA22.2-158		
400 V	300 V	
24 A	20 A	
0.4 Nm	4.5 lb-in	
Melamine / 1		
6 KV / 3		



## CMST2



Connection Possibility as per		IEC	UL - CSA
With 1 Conductor per clamp	Stranded / Flexible	0.2 - 2.5 mm <sup>2</sup>	22 - 14 AWG
	Solid	0.2 - 4.0 mm <sup>2</sup>	22 - 10 AWG
	with Ferrule / Lug	0.2 - 2.5 mm <sup>2</sup>	22 - 14 AWG
With 2 same size Conductors per clamp	Stranded / Flexible	0.2 - 1.5 mm <sup>2</sup>	22 - 18 AWG
	with TWIN Ferrule / Lug	0.2 - 1.5 mm <sup>2</sup>	22 - 18 AWG

Wire Stripping Length	9 mm
-----------------------	------

Ratings As Per	IEC60947-7-1 CSA22.2-158
----------------	--------------------------

Voltage	400 V	300 V		
---------	-------	-------	--	--

Current	24 A	20 A		
---------	------	------	--	--

Torque	0.4 Nm	4.5 lb-in		
--------	--------	-----------	--	--

Approvals	
-----------	--

Insulation Material / Comparative Tracking Index	Melamine / 1
--------------------------------------------------	--------------

Rated Impulse Voltage / Pollution Degree	6 KV / 3
------------------------------------------	----------

		Type / Cat. No.	Length (L) mm	Standard Pack
Terminal Block	12 pole	CMST2	110	20
	2 pole	CMST22W	20	120
	3 pole	CMST23W	29	80
	4 pole	CMST24W	38	60
	5 pole	CMST25W	47	45
	6 pole	CMST26W	56	40
	7 pole	CMST27W	65	30
	8 pole	CMST28W	74	30
	9 pole	CMST29W	83	25
	10 pole	CMST210W	92	20

Panel Fixing Plate		FPCMST		50
--------------------	--	--------	--	----

Two pole Insulated Shorting Link		CA513	I <sub>max</sub> : 24 A	50
----------------------------------	--	-------	-------------------------	----

Marking Strip		CA509/7		10
---------------	--	---------	--	----

Markers Fixing Screw with fibre washer size M3 x 18		CA502/F		20
-----------------------------------------------------	--	---------	--	----

--	--	--	--	--